

**FOXA2 Antibody**  
Rabbit mAb  
Catalog # AP91158

## Specification

---

### FOXA2 Antibody - Product Information

Application	WB, ICC
Primary Accession	<a href="#">O9Y261</a>
Clonality	Monoclonal
<b>Other Names</b>	
Forkhead box protein A2; FOX A2; foxa2; Hepatocyte nuclear factor 3 beta; HNF3B; TCF3B; Transcription factor 3B;	

Isotype	Rabbit IgG
Host	Rabbit
Calculated MW	48306 Da

### FOXA2 Antibody - Additional Information

Purification	Affinity-chromatography
Immunogen	A synthesized peptide derived from human FOXA2
Description	Involved in glucose homeostasis; regulates the expression of genes important for glucose sensing in pancreatic beta-cells and glucose homeostasis. Involved in regulation of fat metabolism. Binds to fibrinogen beta promoter and is involved in IL6-induced fibrinogen beta transcriptional activation.
Storage Condition and Buffer	Rabbit IgG in phosphate buffered saline , pH 7.4, 150mM NaCl, 0.02% sodium azide and 50% glycerol. Store at +4°C short term. Store at -20°C long term. Avoid freeze / thaw cycle.

### FOXA2 Antibody - Protein Information

**Name** FOXA2

**Synonyms** HNF3B, TCF3B

#### Function

Transcription factor that is involved in embryonic development, establishment of tissue-specific gene expression and regulation of gene expression in differentiated tissues. Is thought to act as a 'pioneer' factor opening the compacted chromatin for other proteins through interactions with nucleosomal core histones and thereby replacing linker histones at target enhancer and/or promoter sites. Binds DNA with the consensus sequence 5'- [AC]A[AT]T[AG]TT[GT][AG][CT]T[CT]-3' (By similarity). In embryonic development is required for notochord formation. Involved in the

development of multiple endoderm-derived organ systems such as the liver, pancreas and lungs; FOXA1 and FOXA2 seem to have at least in part redundant roles. Originally described as a transcription activator for a number of liver genes such as AFP, albumin, tyrosine aminotransferase, PEPCK, etc. Interacts with the cis-acting regulatory regions of these genes. Involved in glucose homeostasis; regulates the expression of genes important for glucose sensing in pancreatic beta- cells and glucose homeostasis. Involved in regulation of fat metabolism. Binds to fibrinogen beta promoter and is involved in IL6- induced fibrinogen beta transcriptional activation.

#### Cellular Location

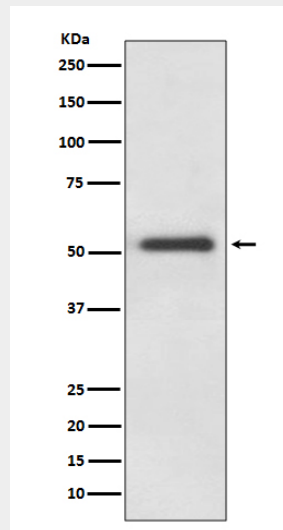
Nucleus {ECO:0000255|PROSITE-ProRule:PRU00089, ECO:0000269|PubMed:14500912}.  
Cytoplasm Note=Shuttles between the nucleus and cytoplasm in a CRM1-dependent manner; in response to insulin signaling via AKT1 is exported from the nucleus

#### FOXA2 Antibody - Protocols

Provided below are standard protocols that you may find useful for product applications.

- [Western Blot](#)
- [Blocking Peptides](#)
- [Dot Blot](#)
- [Immunohistochemistry](#)
- [Immunofluorescence](#)
- [Immunoprecipitation](#)
- [Flow Cytometry](#)
- [Cell Culture](#)

#### FOXA2 Antibody - Images



Western blot analysis of FOXA2 expression in HepG2 cell lysate.