

Calbindin Antibody
Rabbit mAb
Catalog # AP91151**Specification**

Calbindin Antibody - Product Information

| | |
|---|------------------------|
| Application | WB, IHC, ICC |
| Primary Accession | P05937 |
| Reactivity | Rat |
| Clonality | Monoclonal |
| Other Names | |
| avian-type; CAB27; CALB1; Calbindin 1 28kDa; Calbindin; D28K; RTVL H protein; | |
| Isotype | Rabbit IgG |
| Host | Rabbit |
| Calculated MW | 30025 Da |

Calbindin Antibody - Additional Information

| | |
|------------------------------|--|
| Purification | Affinity-chromatography |
| Immunogen | A synthesized peptide derived from human Calbindin |
| Description | Buffers cytosolic calcium. May stimulate a membrane Ca(2+)-ATPase and a 3',5'-cyclic nucleotide phosphodiesterase. |
| Storage Condition and Buffer | Rabbit IgG in phosphate buffered saline , pH 7.4, 150mM NaCl, 0.02% sodium azide and 50% glycerol. Store at +4°C short term. Store at -20°C long term. Avoid freeze / thaw cycle. |

Calbindin Antibody - Protein Information**Name** CALB1**Synonyms** CAB27**Function**

Buffers cytosolic calcium. May stimulate a membrane Ca(2+)- ATPase and a 3',5'-cyclic nucleotide phosphodiesterase.

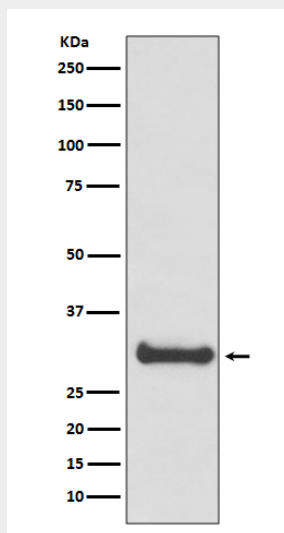
Calbindin Antibody - Protocols

Provided below are standard protocols that you may find useful for product applications.

- [Western Blot](#)
- [Blocking Peptides](#)

- [Dot Blot](#)
- [Immunohistochemistry](#)
- [Immunofluorescence](#)
- [Immunoprecipitation](#)
- [Flow Cytometry](#)
- [Cell Culture](#)

Calbindin Antibody - Images



Western blot analysis of Calbindin expression in human fetal brain lysate.