

Bcl-2 Antibody
Rabbit mAb
Catalog # AP91148

Specification

Bcl-2 Antibody - Product Information

Application **WB, IHC, FC, ICC**
Primary Accession **[P10415](#)**
Clonality **Monoclonal**
Other Names
Apoptosis regulator Bcl-2; BCL2;

Isotype **Rabbit IgG**
Host **Rabbit**
Calculated MW **26266 Da**

Bcl-2 Antibody - Additional Information

Purification **Affinity-chromatography**
Immunogen **A synthesized peptide derived from human Bcl-2**
Description **This gene encodes an integral outer mitochondrial membrane protein that blocks the apoptotic death of some cells such as lymphocytes. Constitutive expression of BCL2, such as in the case of translocation of BCL2 to Ig heavy chain locus, is thought to be the cause of follicular lymphoma. Two transcript variants, produced by alternate splicing, differ in their C-terminal ends.**
Storage Condition and Buffer **Rabbit IgG in phosphate buffered saline , pH 7.4, 150mM NaCl, 0.02% sodium azide and 50% glycerol. Store at +4°C short term. Store at -20°C long term. Avoid freeze / thaw cycle.**

Bcl-2 Antibody - Protein Information

Name BCL2

Function

Suppresses apoptosis in a variety of cell systems including factor-dependent lymphohematopoietic and neural cells (PubMed:<<http://www.uniprot.org/citations/1508712>>, PubMed:<<http://www.uniprot.org/citations/8183370>>). Regulates cell death by controlling the mitochondrial membrane permeability (PubMed:<<http://www.uniprot.org/citations/11368354>>). Appears to function in a feedback loop system with caspases (PubMed:<<http://www.uniprot.org/citations/11368354>>).

Inhibits caspase activity either by preventing the release of cytochrome c from the mitochondria and/or by binding to the apoptosis-activating factor (APAF-1) (PubMed:11368354). Also acts as an inhibitor of autophagy: interacts with BECN1 and AMBRA1 during non-starvation conditions and inhibits their autophagy function (PubMed:18570871, PubMed:20889974, PubMed:21358617). May attenuate inflammation by impairing NLRP1-inflammasome activation, hence CASP1 activation and IL1B release (PubMed:17418785).

Cellular Location

Mitochondrion outer membrane; Single-pass membrane protein. Nucleus membrane; Single-pass membrane protein. Endoplasmic reticulum membrane; Single-pass membrane protein. Cytoplasm {ECO:0000250|UniProtKB:P10417}

Tissue Location

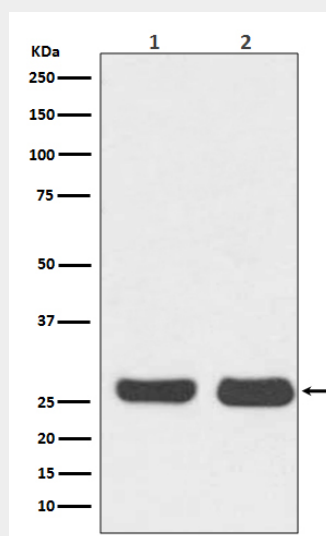
Expressed in a variety of tissues.

Bcl-2 Antibody - Protocols

Provided below are standard protocols that you may find useful for product applications.

- [Western Blot](#)
- [Blocking Peptides](#)
- [Dot Blot](#)
- [Immunohistochemistry](#)
- [Immunofluorescence](#)
- [Immunoprecipitation](#)
- [Flow Cytometry](#)
- [Cell Culture](#)

Bcl-2 Antibody - Images



Western blot analysis of Bcl-2 expression in (1) HeLa cell lysate; (2) NIH/3T3 cell lysate.