

**Actin Antibody**  
Rabbit mAb  
Catalog # AP91147

## Specification

---

### Actin Antibody - Product Information

Application	WB, FC, ICC
Primary Accession	<a href="#">P68133</a>
Reactivity	Rat
Clonality	Monoclonal
<b>Other Names</b>	
ACTA; ACTA1; Actin alpha skeletal muscle; Alpha Actin 1; alpha-actin; Alpha-actin-1; ASMA; CFTD; CFTD1; CFTDM;	
Isotype	Rabbit IgG
Host	Rabbit
Calculated MW	42051 Da

### Actin Antibody - Additional Information

Purification	<b>Affinity-chromatography</b>
Immunogen	<b>A synthesized peptide derived from human Actin</b>
Description	<b>Actins are highly conserved proteins that are involved in various types of cell motility and are ubiquitously expressed in all eukaryotic cells.</b>
Storage Condition and Buffer	<b>Rabbit IgG in phosphate buffered saline , pH 7.4, 150mM NaCl, 0.02% sodium azide and 50% glycerol. Store at +4°C short term. Store at -20°C long term. Avoid freeze / thaw cycle.</b>

### Actin Antibody - Protein Information

**Name** ACTA1

**Synonyms** ACTA

#### Function

Actins are highly conserved proteins that are involved in various types of cell motility and are ubiquitously expressed in all eukaryotic cells.

#### Cellular Location

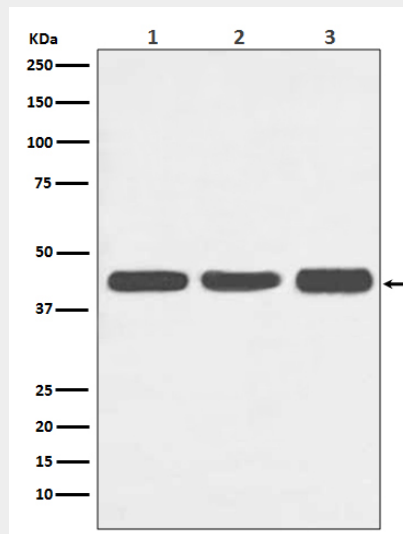
Cytoplasm, cytoskeleton.

### Actin Antibody - Protocols

Provided below are standard protocols that you may find useful for product applications.

- [Western Blot](#)
- [Blocking Peptides](#)
- [Dot Blot](#)
- [Immunohistochemistry](#)
- [Immunofluorescence](#)
- [Immunoprecipitation](#)
- [Flow Cytometry](#)
- [Cell Culture](#)

#### Actin Antibody - Images



Western blot analysis of Actin expression in (1) HeLa cell lysate; (2) NIH/3T3 cell lysate; (3) C6 cell lysate.