

**CD147 Antibody**  
Rabbit mAb  
Catalog # AP91142

## Specification

---

### CD147 Antibody - Product Information

Application	WB, IHC, ICC
Primary Accession	<a href="#">P35613</a>
Reactivity	Rat
Clonality	Monoclonal
<b>Other Names</b>	
Basigin; 5F7; EMMPRIN; Leukocyte activation antigen M6; OK blood group antigen; TCSF; CD147; BSG;	
Isotype	Rabbit IgG
Host	Rabbit
Calculated MW	42200 Da

### CD147 Antibody - Additional Information

Purification	Affinity-chromatography
Immunogen	A synthesized peptide derived from human CD147
Description	Plays pivotal roles in spermatogenesis, embryo implantation, neural network formation and tumor progression. Stimulates adjacent fibroblasts to produce matrix metalloproteinases (MMPS). May target monocarboxylate transporters SLC16A1, SLC16A3 and SLC16A8 to plasma membranes of retinal pigment epithelium and neural retina.
Storage Condition and Buffer	Rabbit IgG in phosphate buffered saline , pH 7.4, 150mM NaCl, 0.02% sodium azide and 50% glycerol. Store at +4°C short term. Store at -20°C long term. Avoid freeze / thaw cycle.

### CD147 Antibody - Protein Information

Name BSG ([HGNC:1116](#))

#### Function

[Isoform 1]: Essential for normal retinal maturation and development (By similarity). Acts as a retinal cell surface receptor for NXNL1 and plays an important role in NXNL1-mediated survival of retinal cone photoreceptors (PubMed:<a href="http://www.uniprot.org/citations/25957687" target="\_blank">25957687</a>). In association with glucose transporter SLC16A1/GLUT1 and NXNL1, promotes retinal cone survival by enhancing aerobic glycolysis and accelerating the entry of glucose into photoreceptors (PubMed:<a href="http://www.uniprot.org/citations/25957687"

target="\_blank">25957687</a>). May act as a potent stimulator of IL6 secretion in multiple cell lines that include monocytes (PubMed:<a href="http://www.uniprot.org/citations/21620857" target="\_blank">21620857</a>).

#### Cellular Location

Melanosome. Note=Identified by mass spectrometry in melanosome fractions from stage I to stage IV. [Isoform 2]: Cell membrane; Single-pass type I membrane protein {ECO:0000250|UniProtKB:P26453}. Endosome Endoplasmic reticulum membrane; Single-pass type I membrane protein {ECO:0000250|UniProtKB:P26453} Basolateral cell membrane; Single-pass type I membrane protein {ECO:0000250|UniProtKB:P26453} [Isoform 4]: Cell membrane; Single-pass type I membrane protein {ECO:0000250|UniProtKB:P26453}

#### Tissue Location

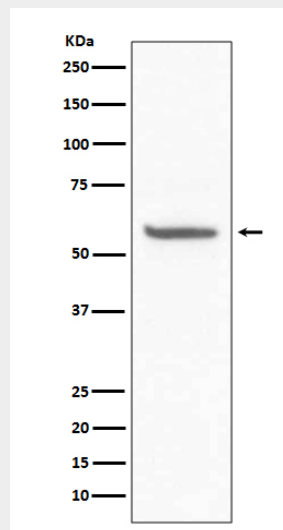
[Isoform 1]: Retina-specific (PubMed:25957687). Expressed in retinal cone photoreceptors (at protein level) (PubMed:25957687). [Isoform 3]: Highly expressed in the bone marrow, fetal liver, lung, testis and thymus.

### CD147 Antibody - Protocols

Provided below are standard protocols that you may find useful for product applications.

- [Western Blot](#)
- [Blocking Peptides](#)
- [Dot Blot](#)
- [Immunohistochemistry](#)
- [Immunofluorescence](#)
- [Immunoprecipitation](#)
- [Flow Cytometry](#)
- [Cell Culture](#)

### CD147 Antibody - Images



Western blot analysis of CD147 expression in Mouse kidney lysate.