

CEA(CD66e) Antibody
Rabbit mAb
Catalog # AP91140**Specification****CEA(CD66e) Antibody - Product Information**

Application	WB, IHC, ICC
Primary Accession	P06731
Clonality	Monoclonal
Other Names	
adhesion molecule 5; CD66e; Ceacam5; Meconium antigen 100;	
Isotype	Rabbit IgG
Host	Rabbit
Calculated MW	76795 Da

CEA(CD66e) Antibody - Additional Information

Purification	Affinity-chromatography
Immunogen	A synthesized peptide derived from human CEA(CD66e)
Description	Carcinoembryonic antigen (CEA), also known as CD66e or CEACAM5, is a 180-200 kDa cell surface glycoprotein whose expression is elevated in intestinal carcinomas and other tumors. CEA mediates cell adhesion, though little more is known about its biological activity.
Storage Condition and Buffer	Rabbit IgG in phosphate buffered saline , pH 7.4, 150mM NaCl, 0.02% sodium azide and 50% glycerol. Store at +4°C short term. Store at -20°C long term. Avoid freeze / thaw cycle.

CEA(CD66e) Antibody - Protein Information**Name** CEACAM5 ([HGNC:1817](#))**Function**

Cell surface glycoprotein that plays a role in cell adhesion, intracellular signaling and tumor progression (PubMed: [10864933](http://www.uniprot.org/citations/10864933), PubMed: [10910050](http://www.uniprot.org/citations/10910050), PubMed: [2803308](http://www.uniprot.org/citations/2803308)). Mediates homophilic and heterophilic cell adhesion with other carcinoembryonic antigen-related cell adhesion molecules, such as CEACAM6 (PubMed: [2803308](http://www.uniprot.org/citations/2803308)). Plays a role as an oncogene by promoting tumor progression; induces resistance to anoikis of colorectal carcinoma cells (PubMed: [10910050](http://www.uniprot.org/citations/10910050)).

Cellular Location

Cell membrane; Lipid-anchor, GPI-anchor. Apical cell membrane. Cell surface Note=Localized to the apical glycolyx surface

Tissue Location

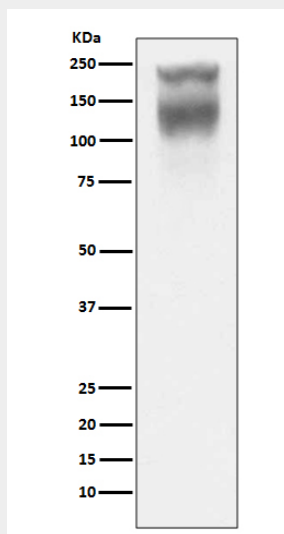
Expressed in columnar epithelial and goblet cells of the colon (at protein level) (PubMed:10436421). Found in adenocarcinomas of endodermally derived digestive system epithelium and fetal colon.

CEA(CD66e) Antibody - Protocols

Provided below are standard protocols that you may find useful for product applications.

- [Western Blot](#)
- [Blocking Peptides](#)
- [Dot Blot](#)
- [Immunohistochemistry](#)
- [Immunofluorescence](#)
- [Immunoprecipitation](#)
- [Flow Cytometry](#)
- [Cell Culture](#)

CEA(CD66e) Antibody - Images



Western blot analysis of CEA(CD66e) expression in Human colon cancer lysate.