

AFP Antibody
Rabbit mAb
Catalog # AP91139

Specification

AFP Antibody - Product Information

Application	WB, IHC, FC, ICC, IP
Primary Accession	P02771
Clonality	Monoclonal
Other Names	
Alpha fetoglobulin; Alpha fetoprotein precursor; FETA; HPAFP;	
Isotype	Rabbit IgG
Host	Rabbit
Calculated MW	68678 Da

AFP Antibody - Additional Information

Purification	Affinity-chromatography
Immunogen	A synthesized peptide derived from human AFP
Description	Alpha-fetoprotein (AFP) is a 65 kDa glycoprotein found in the mammalian fetal liver, yolk sac, and GI tract. In normal adult cells, p53 binds to the repressor region of the AFP gene, thereby blocking transcription. Mutations in both p53 and β -catenin are associated with aberrant expression of AFP. Research studies have shown that elevated serum AFP levels are predictive of hepatocellular carcinoma .
Storage Condition and Buffer	Rabbit IgG in phosphate buffered saline , pH 7.4, 150mM NaCl, 0.02% sodium azide and 50% glycerol. Store at +4°C short term. Store at -20°C long term. Avoid freeze / thaw cycle.

AFP Antibody - Protein Information

Name AFP

Synonyms HPAFP

Function

Binds copper, nickel, and fatty acids as well as, and bilirubin less well than, serum albumin. Only a small percentage (less than 2%) of the human AFP shows estrogen-binding properties.

Cellular Location

Secreted.

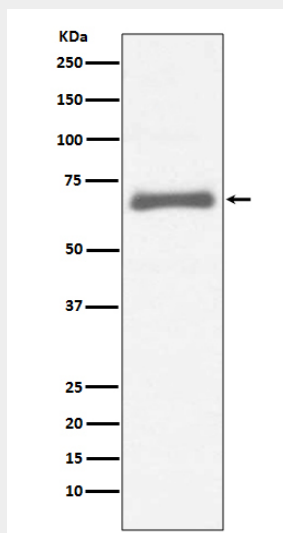
Tissue Location

Plasma. Synthesized by the fetal liver and yolk sac

AFP Antibody - Protocols

Provided below are standard protocols that you may find useful for product applications.

- [Western Blot](#)
- [Blocking Peptides](#)
- [Dot Blot](#)
- [Immunohistochemistry](#)
- [Immunofluorescence](#)
- [Immunoprecipitation](#)
- [Flow Cytometry](#)
- [Cell Culture](#)

AFP Antibody - Images

Western blot analysis of AFP expression in HepG2 cell lysate.