

ApoB Antibody
Rabbit mAb
Catalog # AP91137

Specification

ApoB Antibody - Product Information

Application	WB, FC, IP
Primary Accession	P04114
Clonality	Monoclonal
Other Names	
ApoB 100; ApoB 48; Apolipoprotein B 100; Apolipoprotein B48; FLDB;	
Isotype	Rabbit IgG
Host	Rabbit
Calculated MW	515605 Da

ApoB Antibody - Additional Information

Purification	Affinity-chromatography
Immunogen	A synthesized peptide derived from human ApoB
Description	Functions as a recognition signal for the cellular binding and internalization of LDL particles by the apoB/E receptor. Defects in APOB are a cause of familial hypobetalipoproteinemia (FHBL). Defects in APOB are a cause of familial ligand-defective apolipoprotein B-100 (FDB).
Storage Condition and Buffer	Rabbit IgG in phosphate buffered saline , pH 7.4, 150mM NaCl, 0.02% sodium azide and 50% glycerol. Store at +4°C short term. Store at -20°C long term. Avoid freeze / thaw cycle.

ApoB Antibody - Protein Information

Name APOB

Function

Apolipoprotein B is a major protein constituent of chylomicrons (apo B-48), LDL (apo B-100) and VLDL (apo B-100). Apo B- 100 functions as a recognition signal for the cellular binding and internalization of LDL particles by the apoB/E receptor.

Cellular Location

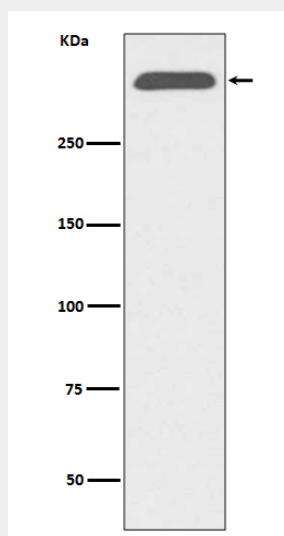
Cytoplasm. Secreted. Lipid droplet

ApoB Antibody - Protocols

Provided below are standard protocols that you may find useful for product applications.

- [Western Blot](#)
- [Blocking Peptides](#)
- [Dot Blot](#)
- [Immunohistochemistry](#)
- [Immunofluorescence](#)
- [Immunoprecipitation](#)
- [Flow Cytometry](#)
- [Cell Culture](#)

ApoB Antibody - Images



Western blot analysis of ApoB expression in human serum lysate.