

Chromogranin A Antibody

Rabbit mAb

Catalog # AP91132

Specification

Chromogranin A Antibody - Product Information

Application	WB, IHC, FC, ICC
Primary Accession	P10645
Clonality	Monoclonal
Other Names	
beta Granin; Chromogranin A; ChrA; SP-I; Vasostatin I; Vasostatin-2; Vasostatin II; Pancreastatin; CHGA;	
Isotype	Rabbit IgG
Host	Rabbit
Calculated MW	50688 Da

Chromogranin A Antibody - Additional Information

Purification	Affinity-chromatography
Immunogen	A synthesized peptide derived from human Chromogranin A
Description	Pancreastatin strongly inhibits glucose induced insulin release from the pancreas.
Storage Condition and Buffer	Rabbit IgG in phosphate buffered saline , pH 7.4, 150mM NaCl, 0.02% sodium azide and 50% glycerol. Store at +4°C short term. Store at -20°C long term. Avoid freeze / thaw cycle.

Chromogranin A Antibody - Protein Information

Name CHGA

Function

[Pancreastatin]: Strongly inhibits glucose induced insulin release from the pancreas. [Serpinin]: Regulates granule biogenesis in endocrine cells by up-regulating the transcription of protease nexin 1 (SERPINE2) via a cAMP-PKA-SP1 pathway. This leads to inhibition of granule protein degradation in the Golgi complex which in turn promotes granule formation.

Cellular Location

[Serpinin]: Secreted {ECO:0000250|UniProtKB:P26339}. Cytoplasmic vesicle, secretory vesicle {ECO:0000250|UniProtKB:P26339}. Note=Pyroglutaminated serpinin localizes to secretory vesicle. {ECO:0000250|UniProtKB:P26339}

Tissue Location

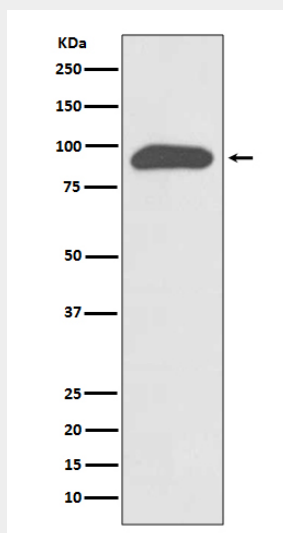
Detected in cerebrospinal fluid (at protein level) (PubMed:25326458). Detected in urine (at protein level) (PubMed:37453717).

Chromogranin A Antibody - Protocols

Provided below are standard protocols that you may find useful for product applications.

- [Western Blot](#)
- [Blocking Peptides](#)
- [Dot Blot](#)
- [Immunohistochemistry](#)
- [Immunofluorescence](#)
- [Immunoprecipitation](#)
- [Flow Cytometry](#)
- [Cell Culture](#)

Chromogranin A Antibody - Images



Western blot analysis of Chromogranin A expression in SH-SY5Y cell lysate.