

GC / VDBP Antibody
Rabbit mAb
Catalog # AP91130

Specification

GC / VDBP Antibody - Product Information

Application	WB, IHC, FC, ICC
Primary Accession	P02774
Clonality	Monoclonal
Other Names	
DBP; DBP/GC; GRD3; VDBG; VDBP;	
Isotype	Rabbit IgG
Host	Rabbit
Calculated MW	52918 Da

GC / VDBP Antibody - Additional Information

Purification	Affinity-chromatography
Immunogen	A synthesized peptide derived from human GC / VDBP
Description	DBP associates with membrane-bound immunoglobulin on the surface of B-lymphocytes and with IgG Fc receptor on the membranes of T-lymphocytes.
Storage Condition and Buffer	Rabbit IgG in phosphate buffered saline , pH 7.4, 150mM NaCl, 0.02% sodium azide and 50% glycerol. Store at +4°C short term. Store at -20°C long term. Avoid freeze / thaw cycle.

GC / VDBP Antibody - Protein Information

Name GC

Function

Involved in vitamin D transport and storage, scavenging of extracellular G-actin, enhancement of the chemotactic activity of C5 alpha for neutrophils in inflammation and macrophage activation.

Cellular Location

Secreted.

Tissue Location

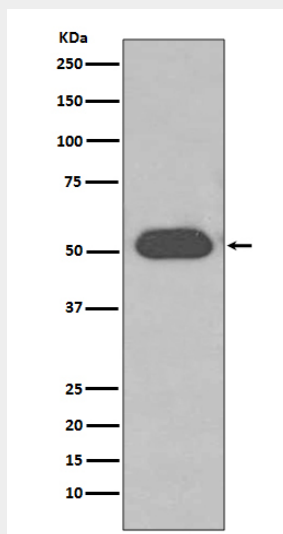
Expressed in the liver. Found in plasma, ascites, cerebrospinal fluid and urine.

GC / VDBP Antibody - Protocols

Provided below are standard protocols that you may find useful for product applications.

- [Western Blot](#)
- [Blocking Peptides](#)
- [Dot Blot](#)
- [Immunohistochemistry](#)
- [Immunofluorescence](#)
- [Immunoprecipitation](#)
- [Flow Cytometry](#)
- [Cell Culture](#)

GC / VDBP Antibody - Images



Western blot analysis of GC/VDBP expression in Human plasma lysate.