

**Serum Albumin Antibody**  
**Rabbit mAb**  
**Catalog # AP91126****Specification**

---

**Serum Albumin Antibody - Product Information**

Application	<b>WB, IHC</b>
Primary Accession	<a href="#">P02768</a>
Reactivity	<b>Rat</b>
Clonality	<b>Monoclonal</b>
<b>Other Names</b>	
ALB; Albumin (32 AA) ;Albumin (AA 34) ;Albumin; BSA; Serum albumin; Bovine Serum Albumin	
Isotype	<b>Rabbit IgG</b>
Host	<b>Rabbit</b>
Calculated MW	<b>69367 Da</b>

**Serum Albumin Antibody - Additional Information**

Purification	<b>Affinity-chromatography</b>
Immunogen	<b>A synthesized peptide derived from Cow Bovine Serum Albumin</b>
Description	<b>Albumin is a soluble, monomeric protein which comprises about one-half of the blood serum protein. Albumin functions primarily as a carrier protein for steroids, fatty acids, and thyroid hormones and plays a role in stabilizing extracellular fluid volume.</b>
Storage Condition and Buffer	<b>Rabbit IgG in phosphate buffered saline , pH 7.4, 150mM NaCl, 0.02% sodium azide and 50% glycerol. Store at +4°C short term. Store at -20°C long term. Avoid freeze / thaw cycle.</b>

**Serum Albumin Antibody - Protein Information****Name ALB****Function**

Binds water, Ca(2+), Na(+), K(+), fatty acids, hormones, bilirubin and drugs (Probable). Its main function is the regulation of the colloidal osmotic pressure of blood (Probable). Major zinc transporter in plasma, typically binds about 80% of all plasma zinc (PubMed:<a href="http://www.uniprot.org/citations/19021548" target="\_blank">19021548</a>). Major calcium and magnesium transporter in plasma, binds approximately 45% of circulating calcium and magnesium in plasma (By similarity). Potentially has more than two calcium-binding sites and might additionally bind calcium in a non-specific manner (By similarity). The shared binding site between zinc and calcium at residue Asp-273 suggests a crosstalk between zinc and calcium transport in the blood (By similarity). The rank order of affinity is zinc > calcium > magnesium (By

similarity). Binds to the bacterial siderophore enterobactin and inhibits enterobactin-mediated iron uptake of E.coli from ferric transferrin, and may thereby limit the utilization of iron and growth of enteric bacteria such as E.coli (PubMed:<a href="http://www.uniprot.org/citations/6234017" target="\_blank">6234017</a>). Does not prevent iron uptake by the bacterial siderophore aerobactin (PubMed:<a href="http://www.uniprot.org/citations/6234017" target="\_blank">6234017</a>).

#### Cellular Location

Secreted.

#### Tissue Location

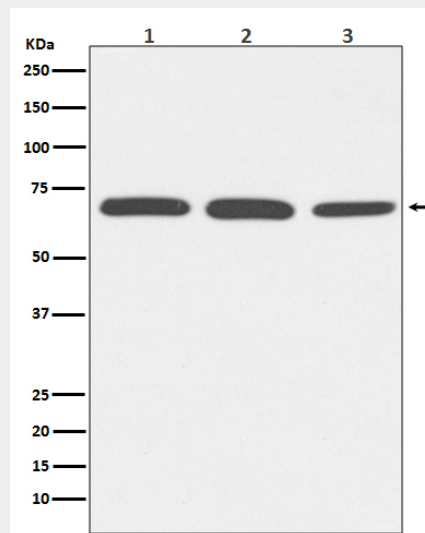
Plasma.

### Serum Albumin Antibody - Protocols

Provided below are standard protocols that you may find useful for product applications.

- [Western Blot](#)
- [Blocking Peptides](#)
- [Dot Blot](#)
- [Immunohistochemistry](#)
- [Immunofluorescence](#)
- [Immunoprecipitation](#)
- [Flow Cytometry](#)
- [Cell Culture](#)

### Serum Albumin Antibody - Images



Western blot analysis of Bovine Serum Albumin expression in (1) HeLa cell lysate; (2) NIH/3T3 cell lysate; (3) PC-12 cell lysate.