

**CNPase Antibody**  
Rabbit mAb  
Catalog # AP91119

## Specification

---

### CNPase Antibody - Product Information

Application	WB
Primary Accession	<a href="#">P09543</a>
Reactivity	Rat
Clonality	Monoclonal
<b>Other Names</b>	
CNP; CNP1; CNPase;	
Isotype	Rabbit IgG
Host	Rabbit
Calculated MW	47579 Da

### CNPase Antibody - Additional Information

Purification	Affinity-chromatography
Immunogen	A synthesized peptide derived from human CNPase
Description	May participate in RNA metabolism in the myelinating cell, CNP is the third most abundant protein in central nervous system myelin
Storage Condition and Buffer	Rabbit IgG in phosphate buffered saline , pH 7.4, 150mM NaCl, 0.02% sodium azide and 50% glycerol. Store at +4°C short term. Store at -20°C long term. Avoid freeze / thaw cycle.

### CNPase Antibody - Protein Information

Name CNP ([HGNC:2158](#))

#### Function

Catalyzes the formation of 2'-nucleotide products from 2',3'- cyclic substrates (By similarity). May participate in RNA metabolism in the myelinating cell, CNP is the third most abundant protein in central nervous system myelin (By similarity).

#### Cellular Location

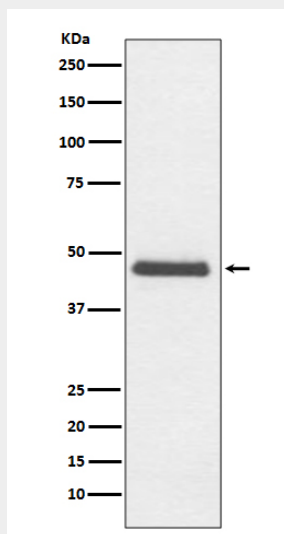
Membrane {ECO:0000250|UniProtKB:P16330}; Lipid- anchor {ECO:0000250|UniProtKB:P16330}. Melanosome. Note=Firmly bound to membrane structures of brain white matter. {ECO:0000250|UniProtKB:P16330}

### CNPase Antibody - Protocols

Provided below are standard protocols that you may find useful for product applications.

- [Western Blot](#)
- [Blocking Peptides](#)
- [Dot Blot](#)
- [Immunohistochemistry](#)
- [Immunofluorescence](#)
- [Immunoprecipitation](#)
- [Flow Cytometry](#)
- [Cell Culture](#)

#### **CNPase Antibody - Images**



Western blot analysis of CNPase expression in C6 cell lysate.