

NCAM Antibody
Rabbit mAb
Catalog # AP91114

Specification

NCAM Antibody - Product Information

Application	WB, IHC, FC, ICC, IP
Primary Accession	P13591
Clonality	Monoclonal
Other Names	
NCAM1; CD56; MSK39; NCAM-1; NCAM;	
Isotype	Rabbit IgG
Host	Rabbit
Calculated MW	94574 Da

NCAM Antibody - Additional Information

Purification	Affinity-chromatography
Immunogen	A synthesized peptide derived from human NCAM
Description	NCAM (neural cell adhesion molecule, CD56) is an adhesion glycoprotein with five extracellular immunoglobulin-like domains followed by two fibronectin type III repeats. NCAM mediates neuronal attachment, neurite extension and cell-cell interactions through homo and heterophilic interactions.
Storage Condition and Buffer	Rabbit IgG in phosphate buffered saline , pH 7.4, 150mM NaCl, 0.02% sodium azide and 50% glycerol. Store at +4°C short term. Store at -20°C long term. Avoid freeze / thaw cycle.

NCAM Antibody - Protein Information

Name NCAM1 ([HGNC:7656](#))

Synonyms NCAM

Function

This protein is a cell adhesion molecule involved in neuron- neuron adhesion, neurite fasciculation, outgrowth of neurites, etc. (Microbial infection) Acts as a receptor for Zika virus.

Cellular Location

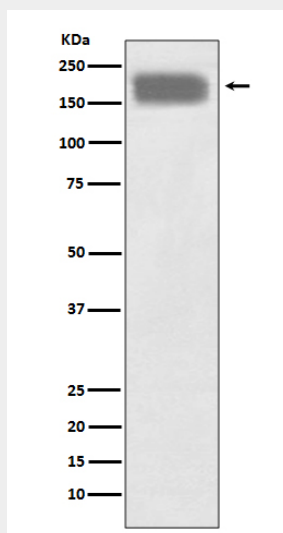
[Isoform 1]: Cell membrane; Single-pass type I membrane protein [Isoform 3]: Cell membrane; Lipid-anchor, GPI- anchor [Isoform 5]: Secreted.

NCAM Antibody - Protocols

Provided below are standard protocols that you may find useful for product applications.

- [Western Blot](#)
- [Blocking Peptides](#)
- [Dot Blot](#)
- [Immunohistochemistry](#)
- [Immunofluorescence](#)
- [Immunoprecipitation](#)
- [Flow Cytometry](#)
- [Cell Culture](#)

NCAM Antibody - Images



Western blot analysis of NCAM expression in SH-SY5Y cell lysate.