

**AGTR1 Antibody**  
Rabbit mAb  
Catalog # AP91112

## Specification

---

### AGTR1 Antibody - Product Information

Application	WB
Primary Accession	<a href="#">P30556</a>
Reactivity	Rat
Clonality	Monoclonal
<b>Other Names</b>	
AGTR1; AG2S; AGTR1A; AGTR1B; AT1; AT1AR; AT1B; AT1BR; AT2R1; AT2R1A; AT2R1B; HAT1R;	
Isotype	Rabbit IgG
Host	Rabbit
Calculated MW	41061 Da

### AGTR1 Antibody - Additional Information

Purification	Affinity-chromatography
Immunogen	A synthesized peptide derived from human AGTR1
Description	Receptor for angiotensin II. Mediates its action by association with G proteins that activate a phosphatidylinositol-calcium second messenger system.
Storage Condition and Buffer	Rabbit IgG in phosphate buffered saline , pH 7.4, 150mM NaCl, 0.02% sodium azide and 50% glycerol. Store at +4°C short term. Store at -20°C long term. Avoid freeze / thaw cycle.

### AGTR1 Antibody - Protein Information

Name AGTR1 ([HGNC:336](#))

#### Function

Receptor for angiotensin II, a vasoconstricting peptide, which acts as a key regulator of blood pressure and sodium retention by the kidney (PubMed:[15611106](http://www.uniprot.org/citations/15611106), PubMed:[1567413](http://www.uniprot.org/citations/1567413), PubMed:[25913193](http://www.uniprot.org/citations/25913193), PubMed:[26420482](http://www.uniprot.org/citations/26420482), PubMed:[30639100](http://www.uniprot.org/citations/30639100), PubMed:[32079768](http://www.uniprot.org/citations/32079768), PubMed:[8987975](http://www.uniprot.org/citations/8987975)). The activated receptor in turn couples to G-alpha proteins G(q) (GNAQ, GNA11, GNA14 or GNA15) and thus activates phospholipase C and increases the cytosolic Ca(2+) concentrations, which in turn triggers cellular responses such as stimulation of protein kinase C (PubMed:[15611106](http://www.uniprot.org/citations/15611106)).

href="http://www.uniprot.org/citations/15611106" target="\_blank">15611106</a>).

#### Cellular Location

Cell membrane; Multi-pass membrane protein

#### Tissue Location

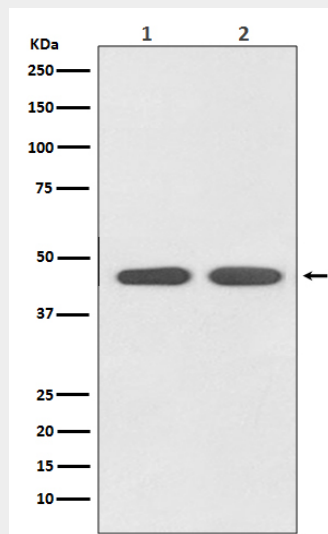
Liver, lung, adrenal and adrenocortical adenomas.

### AGTR1 Antibody - Protocols

Provided below are standard protocols that you may find useful for product applications.

- [Western Blot](#)
- [Blocking Peptides](#)
- [Dot Blot](#)
- [Immunohistochemistry](#)
- [Immunofluorescence](#)
- [Immunoprecipitation](#)
- [Flow Cytometry](#)
- [Cell Culture](#)

### AGTR1 Antibody - Images



Western blot analysis of AGTR1 expression in (1) HeLa cell lysate; (2) PC-12 cell lysate.