

**Prealbumin Antibody**  
Rabbit mAb  
Catalog # AP91107

## Specification

---

### Prealbumin Antibody - Product Information

Application	WB, IHC, IP
Primary Accession	<a href="#">P02766</a>
Clonality	Monoclonal
<b>Other Names</b>	
Amyloid polyneuropathy; Amyloidosis I; ATTR; CTS; PALB; Prealbumin amyloidosis type I; Prealbumin;	
Isotype	Rabbit IgG
Host	Rabbit
Calculated MW	15887 Da

### Prealbumin Antibody - Additional Information

Purification	Affinity-chromatography
Immunogen	A synthesized peptide derived from human Prealbumin
Description	Thyroid hormone-binding protein. Probably transports thyroxine from the bloodstream to the brain.
Storage Condition and Buffer	Rabbit IgG in phosphate buffered saline , pH 7.4, 150mM NaCl, 0.02% sodium azide and 50% glycerol. Store at +4°C short term. Store at -20°C long term. Avoid freeze / thaw cycle.

### Prealbumin Antibody - Protein Information

**Name** TTR

**Synonyms** PALB

#### Function

Thyroid hormone-binding protein. Probably transports thyroxine from the bloodstream to the brain.

#### Cellular Location

Secreted. Cytoplasm.

#### Tissue Location

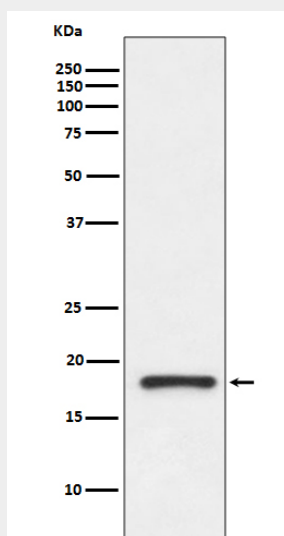
Detected in serum and cerebrospinal fluid (at protein level). Highly expressed in choroid plexus epithelial cells Detected in retina pigment epithelium and liver

## Prealbumin Antibody - Protocols

Provided below are standard protocols that you may find useful for product applications.

- [Western Blot](#)
- [Blocking Peptides](#)
- [Dot Blot](#)
- [Immunohistochemistry](#)
- [Immunofluorescence](#)
- [Immunoprecipitation](#)
- [Flow Cytometry](#)
- [Cell Culture](#)

## Prealbumin Antibody - Images



Western blot analysis of Prealbumin gamma expression in human fetal kidney lysate.