

**SOD1 Antibody**  
Rabbit mAb  
Catalog # AP91097

## Specification

---

### SOD1 Antibody - Product Information

Application	WB, IHC, FC, ICC
Primary Accession	<a href="#">P00441</a>
Reactivity	Rat
Clonality	Monoclonal
<b>Other Names</b>	
ALS1; HEL S 44; Homodimer; hSod1; Indophenoloxidase A; IPOA; SOD1; SOD2; SODC;	
Isotype	Rabbit IgG
Host	Rabbit
Calculated MW	15936 Da

### SOD1 Antibody - Additional Information

Purification	Affinity-chromatography
Immunogen	A synthesized peptide derived from human SOD1
Description	SOD1, Cu/Zn superoxide dismutase, is a major antioxidant enzyme that catalyzes the conversion of superoxide anion to hydrogen peroxide and molecular oxygen. The mechanism by which mutant SOD1 induces the neurodegeneration observed in ALS is still unclear. Mutant SOD1 proteins become misfolded and consequently oligomerize into high molecular weight species that aggregate and end up in proteinaceous inclusions.
Storage Condition and Buffer	Rabbit IgG in phosphate buffered saline , pH 7.4, 150mM NaCl, 0.02% sodium azide and 50% glycerol. Store at +4°C short term. Store at -20°C long term. Avoid freeze / thaw cycle.

### SOD1 Antibody - Protein Information

Name SOD1 ([HGNC:11179](#))

#### Function

Destroys radicals which are normally produced within the cells and which are toxic to biological systems.

#### Cellular Location

Cytoplasm. Nucleus. Note=Predominantly cytoplasmic; the pathogenic variants ALS1 Arg-86 and

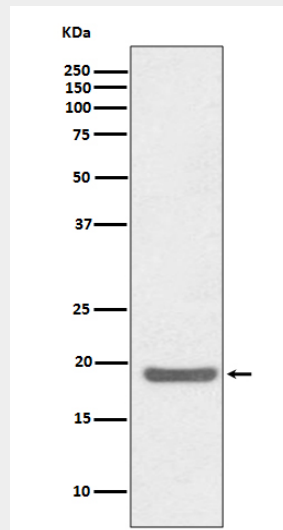
Ala-94 gradually aggregates and accumulates in mitochondria.

### SOD1 Antibody - Protocols

Provided below are standard protocols that you may find useful for product applications.

- [Western Blot](#)
- [Blocking Peptides](#)
- [Dot Blot](#)
- [Immunohistochemistry](#)
- [Immunofluorescence](#)
- [Immunoprecipitation](#)
- [Flow Cytometry](#)
- [Cell Culture](#)

### SOD1 Antibody - Images



Western blot analysis of CD80 expression in Jurkat cell lysate.