

CD80 Antibody
Rabbit mAb
Catalog # AP91096

Specification

CD80 Antibody - Product Information

| | |
|--|------------------------|
| Application | WB, IHC |
| Primary Accession | P33681 |
| Clonality | Monoclonal |
| Other Names | |
| B7.1; BB1; CD28 antigen ligand 1; CD28LG1; CD80; CD80 antigen; T-lymphocyte activation antigen CD80; | |
| Isotype | Rabbit IgG |
| Host | Rabbit |
| Calculated MW | 33048 Da |

CD80 Antibody - Additional Information

| | |
|------------------------------|--|
| Purification | Affinity-chromatography |
| Immunogen | A synthesized peptide derived from human CD80 |
| Description | Expressed on activated B-cells, macrophages and dendritic cells. Involved in the costimulatory signal essential for T-lymphocyte activation. T-cell proliferation and cytokine production is induced by the binding of CD28 or CTLA-4 to this receptor. |
| Storage Condition and Buffer | Rabbit IgG in phosphate buffered saline , pH 7.4, 150mM NaCl, 0.02% sodium azide and 50% glycerol. Store at +4°C short term. Store at -20°C long term. Avoid freeze / thaw cycle. |

CD80 Antibody - Protein Information

Name CD80

Synonyms CD28LG, CD28LG1, LAB7

Function

Costimulatory molecule that belongs to the immunoglobulin superfamily that plays an important role in T-lymphocyte activation (PubMed: [38467718](http://www.uniprot.org/citations/38467718)). Acts as the primary auxiliary signal augmenting the MHC/TCR signal in naive T-cells together with the CD28 receptor which is constitutively expressed on the cell surface of T-cells (PubMed: [12196291](http://www.uniprot.org/citations/12196291)). In turn, activates different signaling pathways such as NF-kappa-B or MAPK leading to the production of different cytokines (PubMed:

<http://www.uniprot.org/citations/10438913> target="_blank">10438913). In addition, CD28/CD80 costimulatory signal stimulates glucose metabolism and ATP synthesis of T-cells by activating the PI3K/Akt signaling pathway (PubMed: <http://www.uniprot.org/citations/12121659> target="_blank">12121659). Acts also as a regulator of PDL1/PDCD1 interactions to limit excess engagement of PDL1 and its inhibitory role in immune responses (PubMed: <http://www.uniprot.org/citations/36727298> target="_blank">36727298). Expressed on B-cells, plays a critical role in regulating interactions between B-cells and T-cells in both early and late germinal center responses, which are crucial for the generation of effective humoral immune responses (By similarity).

Cellular Location

Cell membrane; Single-pass type I membrane protein

Tissue Location

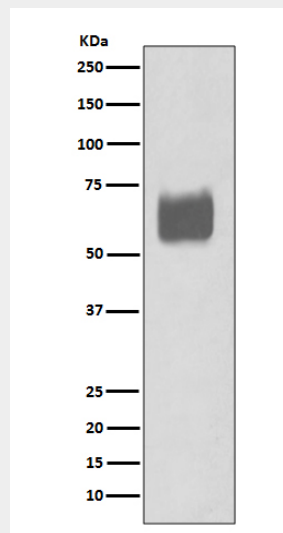
Expressed on activated B-cells, macrophages and dendritic cells

CD80 Antibody - Protocols

Provided below are standard protocols that you may find useful for product applications.

- [Western Blot](#)
- [Blocking Peptides](#)
- [Dot Blot](#)
- [Immunohistochemistry](#)
- [Immunofluorescence](#)
- [Immunoprecipitation](#)
- [Flow Cytometry](#)
- [Cell Culture](#)

CD80 Antibody - Images



Western blot analysis of CD80 expression in Raji cell lysate.