

TBR1 Antibody
Rabbit mAb
Catalog # AP91091

Specification

TBR1 Antibody - Product Information

Application	WB
Primary Accession	Q16650
Reactivity	Rat
Clonality	Monoclonal
Other Names	
T box brain 1; T-brain-1; TBR 1; Tbr1; TES 56;	
Isotype	Rabbit IgG
Host	Rabbit
Calculated MW	74053 Da

TBR1 Antibody - Additional Information

Purification	Affinity-chromatography
Immunogen	A synthesized peptide derived from human TBR1
Description	Probable transcriptional regulator involved in developmental processes. Required for normal brain development.
Storage Condition and Buffer	Rabbit IgG in phosphate buffered saline , pH 7.4, 150mM NaCl, 0.02% sodium azide and 50% glycerol. Store at +4°C short term. Store at -20°C long term. Avoid freeze / thaw cycle.

TBR1 Antibody - Protein Information

Name TBR1

Function

Transcriptional repressor involved in multiple aspects of cortical development, including neuronal migration, laminar and areal identity, and axonal projection (PubMed:25232744, PubMed:30250039). As transcriptional repressor of FEZF2, it blocks the formation of the corticospinal (CS) tract from layer 6 projection neurons, thereby restricting the origin of CS axons specifically to layer 5 neurons (By similarity).

Cellular Location

Nucleus

Tissue Location

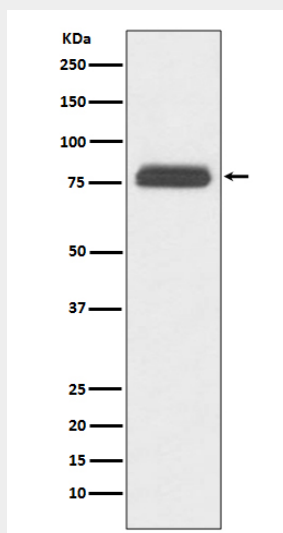
Brain.

TBR1 Antibody - Protocols

Provided below are standard protocols that you may find useful for product applications.

- [Western Blot](#)
- [Blocking Peptides](#)
- [Dot Blot](#)
- [Immunohistochemistry](#)
- [Immunofluorescence](#)
- [Immunoprecipitation](#)
- [Flow Cytometry](#)
- [Cell Culture](#)

TBR1 Antibody - Images



Western blot analysis of TBR1 expression in human fetal brain lysate.