

**NEFH Antibody**  
Rabbit mAb  
Catalog # AP91088

## Specification

---

### NEFH Antibody - Product Information

Application	WB, IHC
Primary Accession	<a href="#">P12036</a>
Reactivity	Rat
Clonality	Monoclonal
<b>Other Names</b>	
NF-H; 200 kDa neurofilament protein; Neurofilament triplet H protein; KIAA0845; NFH; NEFH;	
Isotype	Rabbit IgG
Host	Rabbit
Calculated MW	112479 Da

### NEFH Antibody - Additional Information

Purification	Affinity-chromatography
Immunogen	A synthesized peptide derived from human NEFH
Description	Neurofilaments usually contain three intermediate filament proteins: L, M, and H which are involved in the maintenance of neuronal caliber. NF-H has an important function in mature axons that is not subserved by the two smaller NF proteins. Rabbit IgG in phosphate buffered saline , pH 7.4, 150mM NaCl, 0.02% sodium azide and 50% glycerol. Store at +4°C short term. Store at -20°C long term. Avoid freeze / thaw cycle.
Storage Condition and Buffer	

### NEFH Antibody - Protein Information

**Name** NEFH

**Synonyms** KIAA0845, NFH

#### Function

Neurofilaments usually contain three intermediate filament proteins: NEFL, NEFM, and NEFH which are involved in the maintenance of neuronal caliber. NEFH has an important function in mature axons that is not subserved by the two smaller NF proteins. May additionally cooperate with the neuronal intermediate filament proteins PRPH and INA to form neuronal filamentous networks (By similarity).

#### Cellular Location

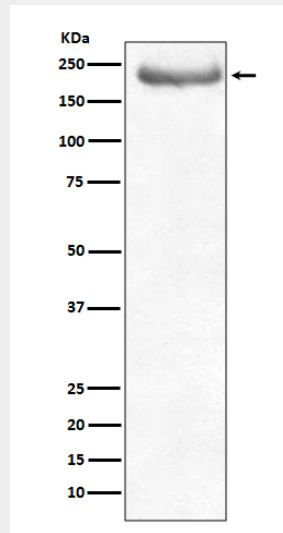
Cytoplasm, cytoskeleton. Cell projection, axon {ECO:0000250|UniProtKB:P19246}

## NEFH Antibody - Protocols

Provided below are standard protocols that you may find useful for product applications.

- [Western Blot](#)
- [Blocking Peptides](#)
- [Dot Blot](#)
- [Immunohistochemistry](#)
- [Immunofluorescence](#)
- [Immunoprecipitation](#)
- [Flow Cytometry](#)
- [Cell Culture](#)

## NEFH Antibody - Images



Western blot analysis of NEFH expression in human brain lysate.