

S100A10 Antibody
Rabbit mAb
Catalog # AP91078

Specification

S100A10 Antibody - Product Information

Application	WB, IHC
Primary Accession	P60903
Clonality	Monoclonal
Other Names	
Protein S100-A10; Calpactin I light chain; Calpactin-1 light chain; S100A10; ANX2LG; CAL1L; CLP11;	
Isotype	Rabbit IgG
Host	Rabbit
Calculated MW	11203 Da

S100A10 Antibody - Additional Information

Purification	Affinity-chromatography
Immunogen	A synthesized peptide derived from human S100A10
Description	S100A10 acts as a cellular chaperone for hepatitis B (Hep B) virus polymerase. Hep B virus polymerase normally localizes to the cytoplasm only, though in the presence of S-100A10 a portion relocates to the nucleus, implying a role for S100A10 and intracellular calcium in the process of viral replication.
Storage Condition and Buffer	Rabbit IgG in phosphate buffered saline , pH 7.4, 150mM NaCl, 0.02% sodium azide and 50% glycerol. Store at +4°C short term. Store at -20°C long term. Avoid freeze / thaw cycle.

S100A10 Antibody - Protein Information

Name S100A10

Synonyms ANX2LG, CAL1L, CLP11

Function

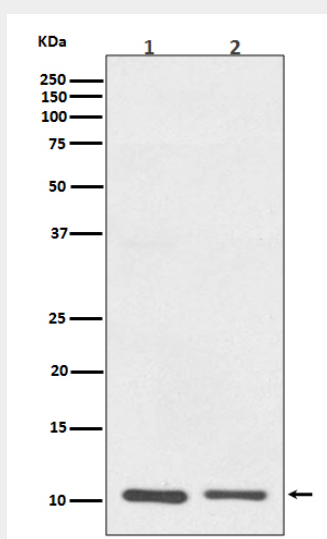
Because S100A10 induces the dimerization of ANXA2/p36, it may function as a regulator of protein phosphorylation in that the ANXA2 monomer is the preferred target (in vitro) of tyrosine-specific kinase.

S100A10 Antibody - Protocols

Provided below are standard protocols that you may find useful for product applications.

- [Western Blot](#)
- [Blocking Peptides](#)
- [Dot Blot](#)
- [Immunohistochemistry](#)
- [Immunofluorescence](#)
- [Immunoprecipitation](#)
- [Flow Cytometry](#)
- [Cell Culture](#)

S100A10 Antibody - Images



Western blot analysis of S100A10 expression in (1) A431 cell lysate; (2) RAW264.7 cell lysate.