

Neutrophil Elastase Antibody
Rabbit mAb
Catalog # AP91077**Specification****Neutrophil Elastase Antibody - Product Information**

Application	WB, IHC, FC, ICC
Primary Accession	P08246
Clonality	Monoclonal
Other Names	
ELA2; ELANE; Elastase 2; Medullasin; Neutrophil elastase; PMN E; SCN1;	
Isotype	Rabbit IgG
Host	Rabbit
Calculated MW	28518 Da

Neutrophil Elastase Antibody - Additional Information

Purification	Affinity-chromatography
Immunogen	A synthesized peptide derived from human Neutrophil Elastase
Description	Modifies the functions of natural killer cells, monocytes and granulocytes. Inhibits C5a-dependent neutrophil enzyme release and chemotaxis.
Storage Condition and Buffer	Rabbit IgG in phosphate buffered saline , pH 7.4, 150mM NaCl, 0.02% sodium azide and 50% glycerol. Store at +4°C short term. Store at -20°C long term. Avoid freeze / thaw cycle.

Neutrophil Elastase Antibody - Protein Information**Name** ELANE**Synonyms** ELA2**Function**

Serine protease that modifies the functions of natural killer cells, monocytes and granulocytes. Inhibits C5a-dependent neutrophil enzyme release and chemotaxis (PubMed: [15140022](http://www.uniprot.org/citations/15140022)). Promotes cleavage of GSDMB, thereby inhibiting pyroptosis (PubMed: [36899106](http://www.uniprot.org/citations/36899106)). Capable of killing E.coli but not S.aureus in vitro; digests outer membrane protein A (ompA) in E.coli and K.pneumoniae (PubMed: [10947984](http://www.uniprot.org/citations/10947984)).

Cellular Location

Cytoplasmic vesicle, phagosome. Note=Localized in phagolysosomes following ingestion of E.coli

by neutrophils

Tissue Location

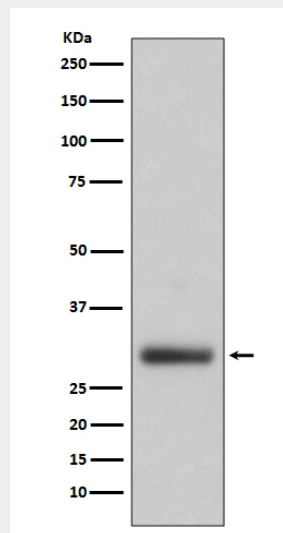
Bone marrow cells. Neutrophil (PubMed:10947984).

Neutrophil Elastase Antibody - Protocols

Provided below are standard protocols that you may find useful for product applications.

- [Western Blot](#)
- [Blocking Peptides](#)
- [Dot Blot](#)
- [Immunohistochemistry](#)
- [Immunofluorescence](#)
- [Immunoprecipitation](#)
- [Flow Cytometry](#)
- [Cell Culture](#)

Neutrophil Elastase Antibody - Images



Western blot analysis of Neutrophil Elastase expression in HL60 cell lysate.