

**PDI Antibody**  
Rabbit mAb  
Catalog # AP91067

## Specification

---

### PDI Antibody - Product Information

Application	WB, FC
Primary Accession	<a href="#">Q13087</a>
Reactivity	Rat
Clonality	Monoclonal
<b>Other Names</b>	
P4HB; PDIA2; PDIR;	
Isotype	Rabbit IgG
Host	Rabbit
Calculated MW	58206 Da

### PDI Antibody - Additional Information

Purification	Affinity-chromatography
Immunogen	A synthesized peptide derived from human PDI
Description	Acts as an intracellular estrogen-binding protein. May be involved in modulating cellular levels and biological functions of estrogens in the pancreas. May act as a chaperone that inhibits aggregation of misfolded proteins.
Storage Condition and Buffer	Rabbit IgG in phosphate buffered saline , pH 7.4, 150mM NaCl, 0.02% sodium azide and 50% glycerol. Store at +4°C short term. Store at -20°C long term. Avoid freeze / thaw cycle.

### PDI Antibody - Protein Information

**Name** PDIA2

**Synonyms** PDIP

#### Function

Acts as an intracellular estrogen-binding protein. May be involved in modulating cellular levels and biological functions of estrogens in the pancreas. May act as a chaperone that inhibits aggregation of misfolded proteins.

#### Cellular Location

Endoplasmic reticulum lumen {ECO:0000255|PROSITE- ProRule:PRU10138}

#### Tissue Location

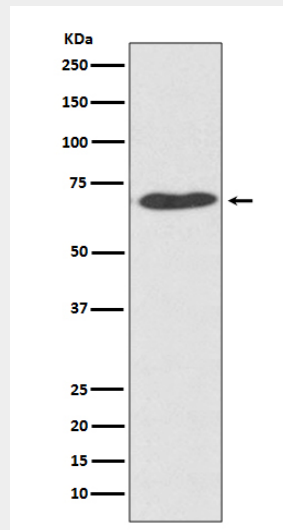
Highly expressed in pancreas (at protein level).

### **PDI Antibody - Protocols**

Provided below are standard protocols that you may find useful for product applications.

- [Western Blot](#)
- [Blocking Peptides](#)
- [Dot Blot](#)
- [Immunohistochemistry](#)
- [Immunofluorescence](#)
- [Immunoprecipitation](#)
- [Flow Cytometry](#)
- [Cell Culture](#)

### **PDI Antibody - Images**



Western blot analysis of PDI expression in HeLa cell lysate.