

LAMA3 Antibody
Rabbit mAb
Catalog # AP91050

Specification

LAMA3 Antibody - Product Information

Application	WB, ICC
Primary Accession	Q16787
Clonality	Monoclonal
Other Names	
LAMA3; Laminin 5 alpha3; E170; LAMNA; LOCS; laminin alpha 3; Laminin A3;	
Isotype	Rabbit IgG
Host	Rabbit
Calculated MW	366649 Da

LAMA3 Antibody - Additional Information

Purification	Affinity-chromatography
Immunogen	A synthesized peptide derived from human LAMA3
Description	Binding to cells via a high affinity receptor, laminin is thought to mediate the attachment, migration and organization of cells into tissues during embryonic development by interacting with other extracellular matrix components.
Storage Condition and Buffer	Rabbit IgG in phosphate buffered saline , pH 7.4, 150mM NaCl, 0.02% sodium azide and 50% glycerol. Store at +4°C short term. Store at -20°C long term. Avoid freeze / thaw cycle.

LAMA3 Antibody - Protein Information

Name LAMA3

Synonyms LAMNA

Function

Binding to cells via a high affinity receptor, laminin is thought to mediate the attachment, migration and organization of cells into tissues during embryonic development by interacting with other extracellular matrix components.

Cellular Location

Secreted, extracellular space, extracellular matrix, basement membrane. Note=Major component

Tissue Location

Skin; respiratory, urinary, and digestive epithelia and in other specialized tissues with prominent

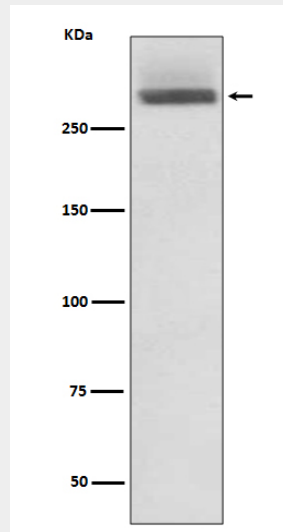
secretory or protective functions. Epithelial basement membrane, and epithelial cell tongue that migrates into a wound bed. A differential and focal expression of the subunit alpha-3 is observed in the CNS

LAMA3 Antibody - Protocols

Provided below are standard protocols that you may find useful for product applications.

- [Western Blot](#)
- [Blocking Peptides](#)
- [Dot Blot](#)
- [Immunohistochemistry](#)
- [Immunofluorescence](#)
- [Immunoprecipitation](#)
- [Flow Cytometry](#)
- [Cell Culture](#)

LAMA3 Antibody - Images



Western blot analysis of LAMA3 expression in HeLa cell lysate.