

MRC1 Antibody
Rabbit mAb
Catalog # AP91044

Specification

MRC1 Antibody - Product Information

Application	WB, ICC
Primary Accession	P22897
Clonality	Monoclonal
Other Names	
Macrophage mannose receptor 1; MMR; CD206 antigen; MRC1; Mannose receptor C type 1; MRC1; CD206; CLEC13D; CLEC13DL; MRC1L1;	
Isotype	Rabbit IgG
Host	Rabbit
Calculated MW	166012 Da

MRC1 Antibody - Additional Information

Purification	Affinity-chromatography
Immunogen	A synthesized peptide derived from human MRC1
Description	Mediates the endocytosis of glycoproteins by macrophages. Binds both sulfated and non-sulfated polysaccharide chains.(Microbial infection) Acts as phagocytic receptor for bacteria, fungi and other pathogens. Acts as a receptor for Dengue virus envelope protein E (PubMed:18266465). Interacts with hepatitis B virus envelope protein (PubMed:19683778).
Storage Condition and Buffer	Rabbit IgG in phosphate buffered saline , pH 7.4, 150mM NaCl, 0.02% sodium azide and 50% glycerol. Store at +4°C short term. Store at -20°C long term. Avoid freeze / thaw cycle.

MRC1 Antibody - Protein Information

Name MRC1

Synonyms CLEC13D, CLEC13DL, MRC1L1

Function

Mediates the endocytosis of glycoproteins by macrophages. Binds both sulfated and non-sulfated polysaccharide chains. (Microbial infection) Acts as a receptor for Dengue virus envelope protein E.

Cellular Location

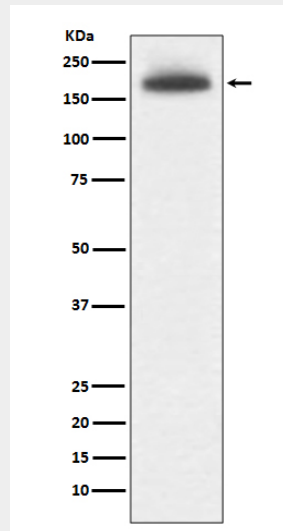
Endosome membrane; Single-pass type I membrane protein. Cell membrane; Single-pass type I membrane protein

MRC1 Antibody - Protocols

Provided below are standard protocols that you may find useful for product applications.

- [Western Blot](#)
- [Blocking Peptides](#)
- [Dot Blot](#)
- [Immunohistochemistry](#)
- [Immunofluorescence](#)
- [Immunoprecipitation](#)
- [Flow Cytometry](#)
- [Cell Culture](#)

MRC1 Antibody - Images



Western blot analysis of MRC1 expression in 293T cell lysate.