

**EBP50 Antibody**  
Rabbit mAb  
Catalog # AP91035

## Specification

---

### EBP50 Antibody - Product Information

Application	WB, IHC
Primary Accession	<a href="#">O14745</a>
Reactivity	Rat
Clonality	Monoclonal
<b>Other Names</b>	
SLC9A3R1; EBP50; NPHLOP2; NHERF; NHERF-1; NHERF1;	
Isotype	Rabbit IgG
Host	Rabbit
Calculated MW	38868 Da

### EBP50 Antibody - Additional Information

Purification	Affinity-chromatography
Immunogen	A synthesized peptide derived from human EBP50
Description	Scaffold protein that connects plasma membrane proteins with members of the ezrin/moesin/radixin family and thereby helps to link them to the actin cytoskeleton and to regulate their surface expression. Necessary for recycling of internalized ADRB2. Was first known to play a role in the regulation of the activity and subcellular location of SLC9A3. Necessary for cAMP-mediated phosphorylation and inhibition of SLC9A3.
Storage Condition and Buffer	Rabbit IgG in phosphate buffered saline , pH 7.4, 150mM NaCl, 0.02% sodium azide and 50% glycerol. Store at +4°C short term. Store at -20°C long term. Avoid freeze / thaw cycle.

### EBP50 Antibody - Protein Information

Name NHERF1 ([HGNC:11075](#))

Synonyms NHERF, SLC9A3R1

#### Function

Scaffold protein that connects plasma membrane proteins with members of the ezrin/moesin/radixin family and thereby helps to link them to the actin cytoskeleton and to regulate their surface expression. Necessary for recycling of internalized ADRB2. Was first known

to play a role in the regulation of the activity and subcellular location of SLC9A3. Necessary for cAMP-mediated phosphorylation and inhibition of SLC9A3. May enhance Wnt signaling. May participate in HTR4 targeting to microvilli (By similarity). Involved in the regulation of phosphate reabsorption in the renal proximal tubules. Involved in sperm capacitation. May participate in the regulation of the chloride and bicarbonate homeostasis in spermatozoa.

#### Cellular Location

Cytoplasm. Apical cell membrane. Endomembrane system; Peripheral membrane protein. Cell projection, filopodium. Cell projection, ruffle. Cell projection, microvillus. Note=Translocates from the cytoplasm to the apical cell membrane in a PODXL-dependent manner. Colocalizes with CFTR at the midpiece of sperm tail (By similarity). Colocalizes with actin in microvilli-rich apical regions of the syncytiotrophoblast. Found in microvilli, ruffling membrane and filopodia of HeLa cells. Present in lipid rafts of T-cells.

#### Tissue Location

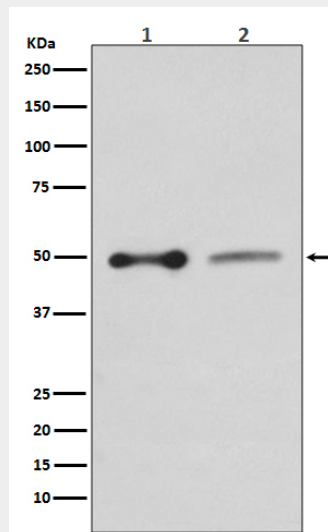
Detected in liver, kidney, pancreas, prostate, spleen, small intestine and placenta, in particular in the syncytiotrophoblast.

### EBP50 Antibody - Protocols

Provided below are standard protocols that you may find useful for product applications.

- [Western Blot](#)
- [Blocking Peptides](#)
- [Dot Blot](#)
- [Immunohistochemistry](#)
- [Immunofluorescence](#)
- [Immunoprecipitation](#)
- [Flow Cytometry](#)
- [Cell Culture](#)

### EBP50 Antibody - Images



Western blot analysis of EBP50 expression in (1) HepG2 cell lysate; (2) PC12 cell lysate.