

**PRDX1 Antibody**  
Rabbit mAb  
Catalog # AP91034

## Specification

---

### PRDX1 Antibody - Product Information

Application	WB, IHC, FC, ICC
Primary Accession	<a href="#">Q06830</a>
Clonality	Monoclonal
<b>Other Names</b>	
PAG; PAGA; PAGB; PRX1; PRXI; MSP23; NKEFA; TDPX2; NKEF-A; Peroxiredoxin1; PRDX1;	
Isotype	Rabbit IgG
Host	Rabbit
Calculated MW	22110 Da

### PRDX1 Antibody - Additional Information

Purification	Affinity-chromatography
Immunogen	A synthesized peptide derived from human PRDX1
Description	Involved in redox regulation of the cell. Reduces peroxides with reducing equivalents provided through the thioredoxin system but not from glutaredoxin. May play an important role in eliminating peroxides generated during metabolism. Might participate in the signaling cascades of growth factors and tumor necrosis factor-alpha by regulating the intracellular concentrations of H2O2.
Storage Condition and Buffer	Rabbit IgG in phosphate buffered saline , pH 7.4, 150mM NaCl, 0.02% sodium azide and 50% glycerol. Store at +4°C short term. Store at -20°C long term. Avoid freeze / thaw cycle.

### PRDX1 Antibody - Protein Information

**Name** PRDX1

**Synonyms** PAGA, PAGB, TDPX2

#### Function

Thiol-specific peroxidase that catalyzes the reduction of hydrogen peroxide and organic hydroperoxides to water and alcohols, respectively. Plays a role in cell protection against oxidative stress by detoxifying peroxides and as sensor of hydrogen peroxide-mediated signaling events. Might participate in the signaling cascades of growth factors and tumor necrosis factor-alpha by regulating the intracellular concentrations of H(2)O(2) (PubMed:<a

[9497357](http://www.uniprot.org/citations/9497357)). Reduces an intramolecular disulfide bond in GDPD5 that gates the ability to GDPD5 to drive postmitotic motor neuron differentiation (By similarity).

#### Cellular Location

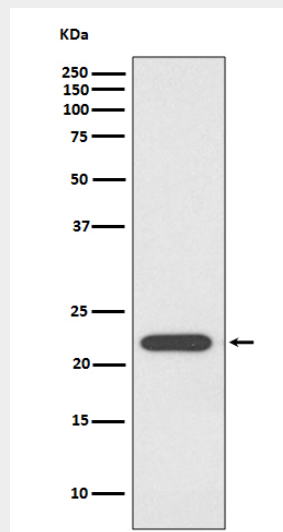
Cytoplasm. Melanosome Note=Identified by mass spectrometry in melanosome fractions from stage I to stage IV

#### PRDX1 Antibody - Protocols

Provided below are standard protocols that you may find useful for product applications.

- [Western Blot](#)
- [Blocking Peptides](#)
- [Dot Blot](#)
- [Immunohistochemistry](#)
- [Immunofluorescence](#)
- [Immunoprecipitation](#)
- [Flow Cytometry](#)
- [Cell Culture](#)

#### PRDX1 Antibody - Images



Western blot analysis of PRDX1 expression in K562 cell lysates.