

VWF Antibody
Rabbit mAb
Catalog # AP91023

Specification

VWF Antibody - Product Information

Application	WB, IHC
Primary Accession	P04275
Clonality	Monoclonal
Other Names	
VWF; von Willebrand factor; von Willebrand antigen II; F8VWF;	
Isotype	Rabbit IgG
Host	Rabbit
Calculated MW	309265 Da

VWF Antibody - Additional Information

Purification	Affinity-chromatography
Immunogen	A synthesized peptide derived from human VWF
Description	VWF is important in hemostasis, and genetic defects in the structure and modification of VWF can cause von Willebrand disease (VWD), the most common congenital bleeding disorder in humans.
Storage Condition and Buffer	Rabbit IgG in phosphate buffered saline , pH 7.4, 150mM NaCl, 0.02% sodium azide and 50% glycerol. Store at +4°C short term. Store at -20°C long term. Avoid freeze / thaw cycle.

VWF Antibody - Protein Information

Name VWF

Synonyms F8VWF

Function

Important in the maintenance of hemostasis, it promotes adhesion of platelets to the sites of vascular injury by forming a molecular bridge between sub-endothelial collagen matrix and platelet- surface receptor complex GPIb-IX-V. Also acts as a chaperone for coagulation factor VIII, delivering it to the site of injury, stabilizing its heterodimeric structure and protecting it from premature clearance from plasma.

Cellular Location

Secreted. Secreted, extracellular space, extracellular matrix. Note=Localized to storage granules

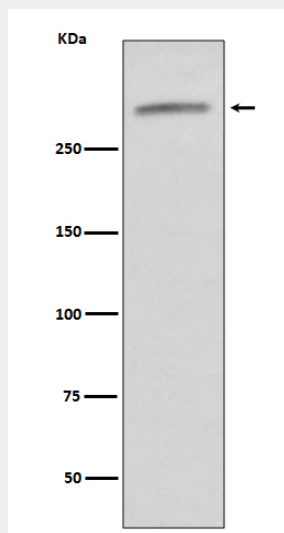
Tissue Location

Plasma.

VWF Antibody - Protocols

Provided below are standard protocols that you may find useful for product applications.

- [Western Blot](#)
- [Blocking Peptides](#)
- [Dot Blot](#)
- [Immunohistochemistry](#)
- [Immunofluorescence](#)
- [Immunoprecipitation](#)
- [Flow Cytometry](#)
- [Cell Culture](#)

VWF Antibody - Images

Western blot analysis of VWF expression in human serum lysate.