

Bmi1 Antibody
Rabbit mAb
Catalog # AP91022

Specification

Bmi1 Antibody - Product Information

Application	WB, IHC, ICC
Primary Accession	P35226
Reactivity	Rat
Clonality	Monoclonal
Other Names	
BMI1 ; Polycomb complex protein BMI 1; RING finger protein 51; RNF51; PCGF4;	
Isotype	Rabbit IgG
Host	Rabbit
Calculated MW	36949 Da

Bmi1 Antibody - Additional Information

Purification	Affinity-chromatography
Immunogen	A synthesized peptide derived from human Bmi1
Description	The polycomb group (PcG) of proteins contributes to the maintenance of cell identity, stem cell self-renewal, cell cycle regulation, and oncogenesis by maintaining the silenced state of genes that promote cell lineage specification, cell death, and cell-cycle arrest. PcG proteins exist in two complexes that cooperate to maintain long-term gene silencing through epigenetic chromatin modifications. The first complex, EED-EZH2, is recruited to genes by DNA-binding transcription factors and methylates histone H3 on Lys27.
Storage Condition and Buffer	Rabbit IgG in phosphate buffered saline , pH 7.4, 150mM NaCl, 0.02% sodium azide and 50% glycerol. Store at +4°C short term. Store at -20°C long term. Avoid freeze / thaw cycle.

Bmi1 Antibody - Protein Information

Name BMI1

Synonyms PCGF4, RNF51

Function

Component of a Polycomb group (PcG) multiprotein PRC1-like complex, a complex class required

to maintain the transcriptionally repressive state of many genes, including Hox genes, throughout development. PcG PRC1 complex acts via chromatin remodeling and modification of histones; it mediates monoubiquitination of histone H2A 'Lys-119', rendering chromatin heritably changed in its expressibility (PubMed:15386022, PubMed:16359901, PubMed:16714294, PubMed:21772249, PubMed:25355358, PubMed:26151332, PubMed:27827373). The complex composed of RNF2, UB2D3 and BMI1 binds nucleosomes, and has activity only with nucleosomal histone H2A (PubMed:21772249, PubMed:25355358). In the PRC1-like complex, regulates the E3 ubiquitin-protein ligase activity of RNF2/RING2 (PubMed:15386022, PubMed:21772249, PubMed:26151332).

Cellular Location

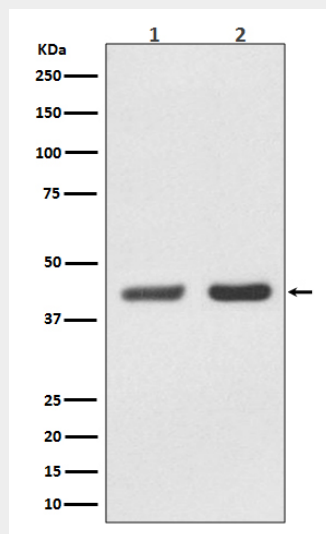
Nucleus. Cytoplasm

Bmi1 Antibody - Protocols

Provided below are standard protocols that you may find useful for product applications.

- [Western Blot](#)
- [Blocking Peptides](#)
- [Dot Blot](#)
- [Immunohistochemistry](#)
- [Immunofluorescence](#)
- [Immunoprecipitation](#)
- [Flow Cytometry](#)
- [Cell Culture](#)

Bmi1 Antibody - Images



Western blot analysis of Bmi1 expression in (1) K562 cell lysate; (2) PC-12 cell lysate.