

FUS / TLS Antibody
Rabbit mAb
Catalog # AP91020

Specification

FUS / TLS Antibody - Product Information

Application	WB, IHC, FC, ICC
Primary Accession	P35637
Reactivity	Rat
Clonality	Monoclonal

Other Names

FUS; ALS6; CHOP; FUS-CHOP; FUS1; Fused in sarcoma; HnRNPP2; Oncogene TLS; ETM4; Fus-like protein; Oncogene FUS; POMP75;

Isotype	Rabbit IgG
Host	Rabbit
Calculated MW	53426 Da

FUS / TLS Antibody - Additional Information

Purification	Affinity-chromatography
Immunogen	A synthesized peptide derived from human FUS / TLS
Description	FUS/TLS (fused in sarcoma/translocated in liposarcoma) was initially identified by investigators as a component of fusion proteins found in a variety of cancers such as myxoid liposarcoma, acute myeloid leukemia, and Ewing's tumor.
Storage Condition and Buffer	Rabbit IgG in phosphate buffered saline , pH 7.4, 150mM NaCl, 0.02% sodium azide and 50% glycerol. Store at +4°C short term. Store at -20°C long term. Avoid freeze / thaw cycle.

FUS / TLS Antibody - Protein Information

Name FUS

Synonyms TLS

Function

DNA/RNA-binding protein that plays a role in various cellular processes such as transcription regulation, RNA splicing, RNA transport, DNA repair and damage response (PubMed:27731383). Binds to nascent pre-mRNAs and acts as a molecular mediator between RNA polymerase II and U1 small nuclear ribonucleoprotein thereby coupling transcription and splicing (PubMed:26124092). Binds also its own pre- mRNA and autoregulates its expression; this autoregulation mechanism is mediated by

non-sense-mediated decay (PubMed:24204307). Plays a role in DNA repair mechanisms by promoting D-loop formation and homologous recombination during DNA double-strand break repair (PubMed:10567410). In neuronal cells, plays crucial roles in dendritic spine formation and stability, RNA transport, mRNA stability and synaptic homeostasis (By similarity).

Cellular Location

Nucleus Note=Displays a punctate pattern inside the nucleus and is excluded from nucleoli.

Tissue Location

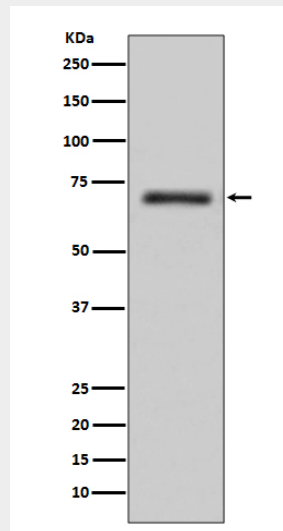
Ubiquitous.

FUS / TLS Antibody - Protocols

Provided below are standard protocols that you may find useful for product applications.

- [Western Blot](#)
- [Blocking Peptides](#)
- [Dot Blot](#)
- [Immunohistochemistry](#)
- [Immunofluorescence](#)
- [Immunoprecipitation](#)
- [Flow Cytometry](#)
- [Cell Culture](#)

FUS / TLS Antibody - Images



Western blot analysis of FUS / TLS expression in K562 cell lysate.