

E2F1 Antibody
Rabbit mAb
Catalog # AP91011

Specification

E2F1 Antibody - Product Information

Application	WB, IHC, FC, ICC, IP
Primary Accession	Q01094
Reactivity	Rat
Clonality	Monoclonal
Other Names	
E2F-1; PBR3; PRB-binding protein E2F-1; RBAP-1; RBBP-3; RBBP3;	
Isotype	Rabbit IgG
Host	Rabbit
Calculated MW	46920 Da

E2F1 Antibody - Additional Information

Purification	Affinity-chromatography
Immunogen	A synthesized peptide derived from human E2F1
Description	The protein encoded by this gene is a member of the E2F family of transcription factors. The E2F family plays a crucial role in the control of cell cycle and action of tumor suppressor proteins and is also a target of the transforming proteins of small DNA tumor viruses.
Storage Condition and Buffer	Rabbit IgG in phosphate buffered saline , pH 7.4, 150mM NaCl, 0.02% sodium azide and 50% glycerol. Store at +4°C short term. Store at -20°C long term. Avoid freeze / thaw cycle.

E2F1 Antibody - Protein Information

Name E2F1 {ECO:0000303|PubMed:8964493, ECO:0000312|HGNC:HGNC:3113}

Function

Transcription activator that binds DNA cooperatively with DP proteins through the E2 recognition site, 5'-TTTC[CG]CGC-3' found in the promoter region of a number of genes whose products are involved in cell cycle regulation or in DNA replication (PubMed:[10675335](http://www.uniprot.org/citations/10675335), PubMed:[12717439](http://www.uniprot.org/citations/12717439), PubMed:[17050006](http://www.uniprot.org/citations/17050006), PubMed:[17704056](http://www.uniprot.org/citations/17704056), PubMed:[18625225](http://www.uniprot.org/citations/18625225), PubMed:[28992046](http://www.uniprot.org/citations/28992046)). The

DRTF1/E2F complex functions in the control of cell-cycle progression from G1 to S phase (PubMed:10675335, PubMed:12717439, PubMed:17704056). E2F1 binds preferentially RB1 in a cell-cycle dependent manner (PubMed:10675335, PubMed:12717439, PubMed:17704056). It can mediate both cell proliferation and TP53/p53- dependent apoptosis (PubMed:8170954). Blocks adipocyte differentiation by binding to specific promoters repressing CEBPA binding to its target gene promoters (PubMed:20176812). Directly activates transcription of PEG10 (PubMed:17050006, PubMed:18625225, PubMed:28992046). Positively regulates transcription of RRP1B (PubMed:20040599).

Cellular Location

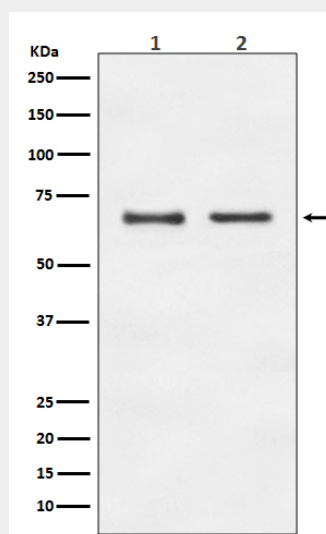
Nucleus

E2F1 Antibody - Protocols

Provided below are standard protocols that you may find useful for product applications.

- [Western Blot](#)
- [Blocking Peptides](#)
- [Dot Blot](#)
- [Immunohistochemistry](#)
- [Immunofluorescence](#)
- [Immunoprecipitation](#)
- [Flow Cytometry](#)
- [Cell Culture](#)

E2F1 Antibody - Images



Western blot analysis of E2F1 expression in (1) HeLa cell lysate; (2) NIH/3T3 cell lysate.