

Occludin Antibody
Rabbit mAb
Catalog # AP90995

Specification

Occludin Antibody - Product Information

Application	WB, FC, IP
Primary Accession	Q16625
Reactivity	Rat
Clonality	Monoclonal
Other Names	
OCLN; Occludin; BLCPMG;	
Isotype	Rabbit IgG
Host	Rabbit
Calculated MW	59144 Da

Occludin Antibody - Additional Information

Purification	Affinity-chromatography
Immunogen	A synthesized peptide derived from human Occludin
Description	May play a role in the formation and regulation of the tight junction (TJ) paracellular permeability barrier. It is able to induce adhesion when expressed in cells lacking tight junctions.
Storage Condition and Buffer	Rabbit IgG in phosphate buffered saline , pH 7.4, 150mM NaCl, 0.02% sodium azide and 50% glycerol. Store at +4°C short term. Store at -20°C long term. Avoid freeze / thaw cycle.

Occludin Antibody - Protein Information

Name OCLN

Function

May play a role in the formation and regulation of the tight junction (TJ) paracellular permeability barrier. It is able to induce adhesion when expressed in cells lacking tight junctions.

Cellular Location

Cell membrane; Multi-pass membrane protein. Cell junction, tight junction

Tissue Location

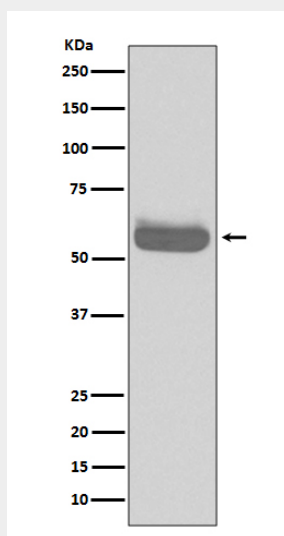
Localized at tight junctions of both epithelial and endothelial cells. Highly expressed in kidney. Not detected in testis

Occludin Antibody - Protocols

Provided below are standard protocols that you may find useful for product applications.

- [Western Blot](#)
- [Blocking Peptides](#)
- [Dot Blot](#)
- [Immunohistochemistry](#)
- [Immunofluorescence](#)
- [Immunoprecipitation](#)
- [Flow Cytometry](#)
- [Cell Culture](#)

Occludin Antibody - Images



Western blot analysis of Occludin expression in HepG2 cell lysate.