

**SUZ12 Antibody**  
Rabbit mAb  
Catalog # AP90989

## Specification

---

### SUZ12 Antibody - Product Information

Application	WB, ICC, IP
Primary Accession	<a href="#">Q15022</a>
Reactivity	Rat
Clonality	Monoclonal
<b>Other Names</b>	
CHET9; JJAZ1; KIAA0160; SUZ12;	
Isotype	Rabbit IgG
Host	Rabbit
Calculated MW	83055 Da

### SUZ12 Antibody - Additional Information

Purification	Affinity-chromatography
Immunogen	A synthesized peptide derived from human SUZ12
Description	Polycomb group (PcG) protein. Component of the PRC2/EED-EZH2 complex, which methylates 'Lys-9' (H3K9me) and 'Lys-27' (H3K27me) of histone H3, leading to transcriptional repression of the affected target gene. The PRC2/EED-EZH2 complex may also serve as a recruiting platform for DNA methyltransferases, thereby linking two epigenetic repression systems.
Storage Condition and Buffer	Rabbit IgG in phosphate buffered saline , pH 7.4, 150mM NaCl, 0.02% sodium azide and 50% glycerol. Store at +4°C short term. Store at -20°C long term. Avoid freeze / thaw cycle.

### SUZ12 Antibody - Protein Information

**Name** SUZ12

**Synonyms** CHET9, JJAZ1, KIAA0160

#### Function

Polycomb group (PcG) protein. Component of the PRC2 complex, which methylates 'Lys-9' (H3K9me) and 'Lys-27' (H3K27me) of histone H3, leading to transcriptional repression of the affected target gene (PubMed:<a href="http://www.uniprot.org/citations/15225548" target="\_blank">15225548</a>, PubMed:<a href="http://www.uniprot.org/citations/15231737" target="\_blank">15231737</a>, PubMed:<a href="http://www.uniprot.org/citations/15385962" target="\_blank">15385962</a>)

target="\_blank">15385962</a>, PubMed:<a href="http://www.uniprot.org/citations/16618801" target="\_blank">16618801</a>, PubMed:<a href="http://www.uniprot.org/citations/17344414" target="\_blank">17344414</a>, PubMed:<a href="http://www.uniprot.org/citations/18285464" target="\_blank">18285464</a>, PubMed:<a href="http://www.uniprot.org/citations/28229514" target="\_blank">28229514</a>, PubMed:<a href="http://www.uniprot.org/citations/29499137" target="\_blank">29499137</a>, PubMed:<a href="http://www.uniprot.org/citations/31959557" target="\_blank">31959557</a>). The PRC2 complex may also serve as a recruiting platform for DNA methyltransferases, thereby linking two epigenetic repression systems (PubMed:<a href="http://www.uniprot.org/citations/12351676" target="\_blank">12351676</a>, PubMed:<a href="http://www.uniprot.org/citations/12435631" target="\_blank">12435631</a>, PubMed:<a href="http://www.uniprot.org/citations/15099518" target="\_blank">15099518</a>, PubMed:<a href="http://www.uniprot.org/citations/15225548" target="\_blank">15225548</a>, PubMed:<a href="http://www.uniprot.org/citations/15385962" target="\_blank">15385962</a>, PubMed:<a href="http://www.uniprot.org/citations/15684044" target="\_blank">15684044</a>, PubMed:<a href="http://www.uniprot.org/citations/16431907" target="\_blank">16431907</a>, PubMed:<a href="http://www.uniprot.org/citations/18086877" target="\_blank">18086877</a>, PubMed:<a href="http://www.uniprot.org/citations/18285464" target="\_blank">18285464</a>). Genes repressed by the PRC2 complex include HOXC8, HOXA9, MYT1 and CDKN2A (PubMed:<a href="http://www.uniprot.org/citations/15231737" target="\_blank">15231737</a>, PubMed:<a href="http://www.uniprot.org/citations/16618801" target="\_blank">16618801</a>, PubMed:<a href="http://www.uniprot.org/citations/17200670" target="\_blank">17200670</a>, PubMed:<a href="http://www.uniprot.org/citations/31959557" target="\_blank">31959557</a>).

#### Cellular Location

Nucleus Note=Localizes to chromatin as part of the PRC2 complex

#### Tissue Location

Overexpressed in breast and colon cancer.

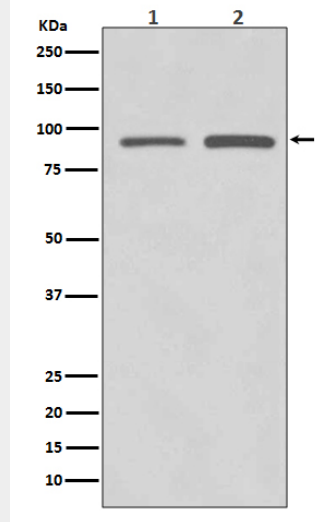
#### SUZ12 Antibody - Protocols

Provided below are standard protocols that you may find useful for product applications.

- [Western Blot](#)
- [Blocking Peptides](#)
- [Dot Blot](#)
- [Immunohistochemistry](#)
- [Immunofluorescence](#)
- [Immunoprecipitation](#)
- [Flow Cytometry](#)
- [Cell Culture](#)

#### SUZ12 Antibody - Images





Western blot analysis of SUZ12 expression in (1) HeLa cell lysate; (2) SW480 cell lysate.