

**KIF11 Antibody (N-term)**  
**Affinity Purified Rabbit Polyclonal Antibody (Pab)**  
**Catalog # AP9097A**

**Specification**

---

**KIF11 Antibody (N-term) - Product Information**

Application	WB, IHC-P, FC,E
Primary Accession	<a href="#">P52732</a>
Reactivity	Human, Hamster
Host	Rabbit
Clonality	Polyclonal
Isotype	Rabbit IgG
Calculated MW	119159
Antigen Region	103-130

**KIF11 Antibody (N-term) - Additional Information**

**Gene ID** 3832

**Other Names**

Kinesin-like protein KIF11, Kinesin-like protein 1, Kinesin-like spindle protein HKSP, Kinesin-related motor protein Eg5, Thyroid receptor-interacting protein 5, TR-interacting protein 5, TRIP-5, KIF11, EG5, KNSL1, TRIP5

**Target/Specificity**

This KIF11 antibody is generated from rabbits immunized with a KLH conjugated synthetic peptide between 103-130 amino acids from the N-terminal region of human KIF11.

**Dilution**

WB~~1:1000  
IHC-P~~1:50~100  
FC~~1:10~50

**Format**

Purified polyclonal antibody supplied in PBS with 0.09% (W/V) sodium azide. This antibody is purified through a protein A column, followed by peptide affinity purification.

**Storage**

Maintain refrigerated at 2-8°C for up to 2 weeks. For long term storage store at -20°C in small aliquots to prevent freeze-thaw cycles.

**Precautions**

KIF11 Antibody (N-term) is for research use only and not for use in diagnostic or therapeutic procedures.

**KIF11 Antibody (N-term) - Protein Information**

**Name** KIF11

**Synonyms** EG5, KNSL1, TRIP5

**Function** Motor protein required for establishing a bipolar spindle and thus contributing to chromosome congression during mitosis (PubMed:[19001501](#), PubMed:[37728657](#)). Required in non-mitotic cells for transport of secretory proteins from the Golgi complex to the cell surface (PubMed:[23857769](#)).

**Cellular Location**

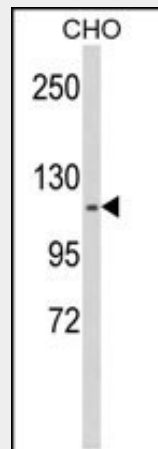
Cytoplasm. Cytoplasm, cytoskeleton, spindle pole

**KIF11 Antibody (N-term) - Protocols**

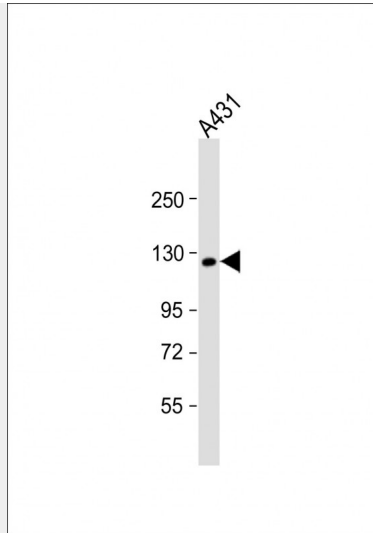
Provided below are standard protocols that you may find useful for product applications.

- [Western Blot](#)
- [Blocking Peptides](#)
- [Dot Blot](#)
- [Immunohistochemistry](#)
- [Immunofluorescence](#)
- [Immunoprecipitation](#)
- [Flow Cytometry](#)
- [Cell Culture](#)

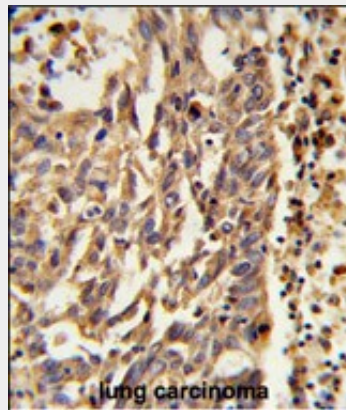
**KIF11 Antibody (N-term) - Images**



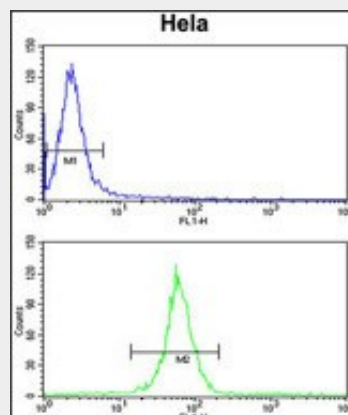
Western blot analysis of KIF11 Antibody (N-term) (Cat. #AP9097a) in CHO cell line lysates (35ug/lane). KIF11 (arrow) was detected using the purified Pab.



Anti-KIF11 Antibody (N-term) at 1:1000 dilution + A431 whole cell lysate Lysates/proteins at 20 µg per lane. Secondary Goat Anti-Rabbit IgG, (H+L), Peroxidase conjugated at 1/10000 dilution. Predicted band size : 119 kDa Blocking/Dilution buffer: 5% NFDN/TBST.



Formalin-fixed and paraffin-embedded human lung carcinoma reacted with KIF11 Antibody (N-term), which was peroxidase-conjugated to the secondary antibody, followed by DAB staining. This data demonstrates the use of this antibody for immunohistochemistry; clinical relevance has not been evaluated.



KIF11 Antibody (N-term) (Cat.#AP9097a) flow cytometry analysis of HeLa cells (bottom histogram) compared to a negative control cell (top histogram). FITC-conjugated goat-anti-rabbit secondary antibodies were used for the analysis.

**KIF11 Antibody (N-term) - Background**

KIF11 belongs to the kinesin-like protein family. Members of this protein family are known to be involved in various kinds of spindle dynamics. The function of this gene product includes chromosome positioning, centrosome separation and establishing a bipolar spindle during cell mitosis.

#### **KIF11 Antibody (N-term) - References**

Tcherniuk,S., et.al., Biochem. Pharmacol. 79 (6), 864-872 (2010)

Parke,C.L., et.al., J. Biol. Chem. 285 (8), 5859-5867 (2010)