

Mitofilin Antibody
Rabbit mAb
Catalog # AP90972

Specification

Mitofilin Antibody - Product Information

| | |
|-------------------|------------------------|
| Application | WB, IHC, FC, ICC |
| Primary Accession | Q16891 |
| Reactivity | Human |
| Clonality | Monoclonal |

Other Names

Cell proliferation-inducing gene 4/52 protein; Heart muscle protein; HMP; IMMT; p87/89; pig4; PIG52;

| | |
|---------------|------------|
| Isotype | Rabbit IgG |
| Host | Rabbit |
| Calculated MW | 83678 Da |

Mitofilin Antibody - Additional Information

| | |
|------------------------------|--|
| Purification | Affinity-chromatography |
| Immunogen | A synthesized peptide derived from human Mitofilin |
| Description | Component of the MICOS complex, a large protein complex of the mitochondrial inner membrane that plays crucial roles in the maintenance of crista junctions, inner membrane architecture, and formation of contact sites to the outer membrane. Plays an important role in the maintenance of the MICOS complex stability and the mitochondrial cristae morphology (PubMed:22114354, PubMed:25781180). |
| Storage Condition and Buffer | Rabbit IgG in phosphate buffered saline , pH 7.4, 150mM NaCl, 0.02% sodium azide and 50% glycerol. Store at +4°C short term. Store at -20°C long term. Avoid freeze / thaw cycle. |

Mitofilin Antibody - Protein Information

Name IMMT

Synonyms HMP, MIC60, MINOS2

Function

Component of the MICOS complex, a large protein complex of the mitochondrial inner membrane that plays crucial roles in the maintenance of crista junctions, inner membrane architecture, and formation of contact sites to the outer membrane (PubMed:<a

<http://www.uniprot.org/citations/22114354> target="_blank">22114354, PubMed:25781180, PubMed:32567732, PubMed:33130824). Plays an important role in the maintenance of the MICOS complex stability and the mitochondrial cristae morphology (PubMed:22114354, PubMed:25781180, PubMed:32567732, PubMed:33130824).

Cellular Location

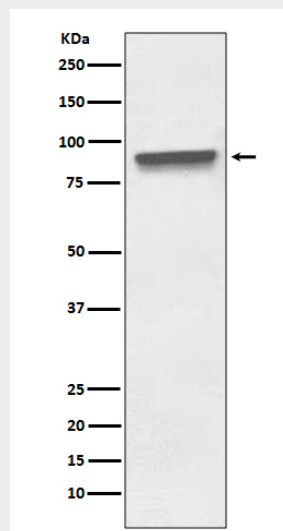
Mitochondrion inner membrane; Single-pass membrane protein. Mitochondrion

Mitofilin Antibody - Protocols

Provided below are standard protocols that you may find useful for product applications.

- [Western Blot](#)
- [Blocking Peptides](#)
- [Dot Blot](#)
- [Immunohistochemistry](#)
- [Immunofluorescence](#)
- [Immunoprecipitation](#)
- [Flow Cytometry](#)
- [Cell Culture](#)

Mitofilin Antibody - Images



Western blot analysis of Mitofilin expression in HeLa cell lysate.