

**PAX8 Antibody**  
Rabbit mAb  
Catalog # AP90970

## Specification

---

### PAX8 Antibody - Product Information

Application	WB, IHC, ICC
Primary Accession	<a href="#">Q06710</a>
Clonality	Monoclonal
<b>Other Names</b>	
Paired box 8; Paired box gene 8; paired box homeotic gene 8; Paired box protein Pax 8; Paired domain gene 8; PAX8;	
Isotype	Rabbit IgG
Host	Rabbit
Calculated MW	48218 Da

### PAX8 Antibody - Additional Information

Purification	Affinity-chromatography
Immunogen	A synthesized peptide derived from human PAX8
Description	Transcription factor for the thyroid-specific expression of the genes exclusively expressed in the thyroid cell type, maintaining the functional differentiation of such cells.
Storage Condition and Buffer	Rabbit IgG in phosphate buffered saline , pH 7.4, 150mM NaCl, 0.02% sodium azide and 50% glycerol. Store at +4°C short term. Store at -20°C long term. Avoid freeze / thaw cycle.

### PAX8 Antibody - Protein Information

**Name** PAX8

#### Function

Transcription factor for the thyroid-specific expression of the genes exclusively expressed in the thyroid cell type, maintaining the functional differentiation of such cells.

#### Cellular Location

Nucleus.

#### Tissue Location

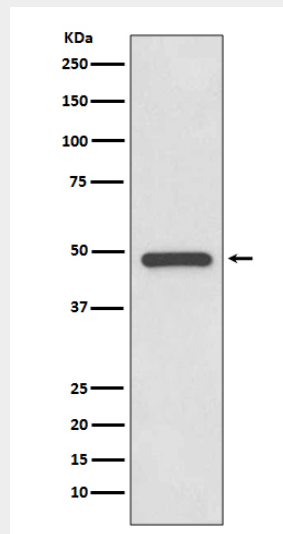
Expressed in the excretory system, thyroid gland and Wilms tumors

## PAX8 Antibody - Protocols

Provided below are standard protocols that you may find useful for product applications.

- [Western Blot](#)
- [Blocking Peptides](#)
- [Dot Blot](#)
- [Immunohistochemistry](#)
- [Immunofluorescence](#)
- [Immunoprecipitation](#)
- [Flow Cytometry](#)
- [Cell Culture](#)

## PAX8 Antibody - Images



Western blot analysis of PAX8 expression in SK-OV-3 cell lysate.