

Phospho-B Raf (T401) Antibody
Rabbit mAb
Catalog # AP90960

Specification

Phospho-B Raf (T401) Antibody - Product Information

Application	WB, ICC, IP
Primary Accession	P15056
Reactivity	Rat
Clonality	Monoclonal

Other Names

B-RAF; B-RAF proto-oncogene serine/threonine-protein kinase; BRAF1; RAFB1; RMIL; RMIL serine/threonine-protein kinase; c-RMIL; kinase B-Raf;

Isotype	Rabbit IgG
Host	Rabbit
Calculated MW	84437 Da

Phospho-B Raf (T401) Antibody - Additional Information

Purification	Affinity-chromatography
Immunogen	A synthesized peptide derived from human Phospho-B Raf (T401)
Description	Protein kinase involved in the transduction of mitogenic signals from the cell membrane to the nucleus. May play a role in the postsynaptic responses of hippocampal neuron. Phosphorylates MAP2K1, and thereby contributes to the MAP kinase signal transduction pathway.
Storage Condition and Buffer	Rabbit IgG in phosphate buffered saline , pH 7.4, 150mM NaCl, 0.02% sodium azide and 50% glycerol. Store at +4°C short term. Store at -20°C long term. Avoid freeze / thaw cycle.

Phospho-B Raf (T401) Antibody - Protein Information

Name BRAF ([HGNC:1097](#))

Synonyms BRAF1, RAFB1

Function

Protein kinase involved in the transduction of mitogenic signals from the cell membrane to the nucleus (Probable). Phosphorylates MAP2K1, and thereby activates the MAP kinase signal transduction pathway (PubMed:[21441910](http://www.uniprot.org/citations/21441910), PubMed:[29433126](http://www.uniprot.org/citations/29433126)). Phosphorylates PFKFB2 (PubMed:[36402789](http://www.uniprot.org/citations/36402789)). May play a

role in the postsynaptic responses of hippocampal neurons (PubMed:1508179).

Cellular Location

Nucleus. Cytoplasm. Cell membrane. Note=Colocalizes with RGS14 and RAF1 in both the cytoplasm and membranes.

Tissue Location

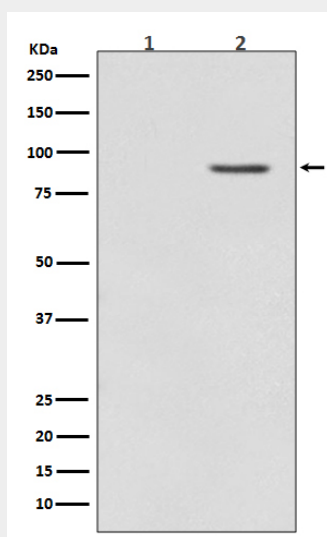
Brain and testis.

Phospho-B Raf (T401) Antibody - Protocols

Provided below are standard protocols that you may find useful for product applications.

- [Western Blot](#)
- [Blocking Peptides](#)
- [Dot Blot](#)
- [Immunohistochemistry](#)
- [Immunofluorescence](#)
- [Immunoprecipitation](#)
- [Flow Cytometry](#)
- [Cell Culture](#)

Phospho-B Raf (T401) Antibody - Images



Western blot analysis of Phospho-B Raf (T401) expression in (1) PC-12 cell lysate; (2) PC-12 cell lysate treated with TPA.