

A-RAF Antibody
Rabbit mAb
Catalog # AP90956

Specification

A-RAF Antibody - Product Information

Application **WB, IHC, FC, ICC**
Primary Accession [P10398](#)
Clonality **Monoclonal**

Other Names

ARAF; A-raf-1; PKS2; Proto-oncogene A-Raf; Proto-oncogene A-Raf-1; Ras-binding protein DA-Raf; Oncogene ARAF1; ARAF1; RAFA1;

Isotype **Rabbit IgG**
Host **Rabbit**
Calculated MW **67585 Da**

A-RAF Antibody - Additional Information

Purification **Affinity-chromatography**
Immunogen **A synthesized peptide derived from human A-RAF**
Description **Involved in the transduction of mitogenic signals from the cell membrane to the nucleus. May also regulate the TOR signaling cascade.**
Storage Condition and Buffer **Rabbit IgG in phosphate buffered saline , pH 7.4, 150mM NaCl, 0.02% sodium azide and 50% glycerol. Store at +4°C short term. Store at -20°C long term. Avoid freeze / thaw cycle.**

A-RAF Antibody - Protein Information

Name ARAF

Synonyms ARAF1, PKS, PKS2

Function

Involved in the transduction of mitogenic signals from the cell membrane to the nucleus. May also regulate the TOR signaling cascade. Phosphorylates PFKFB2 (PubMed:36402789).

Tissue Location

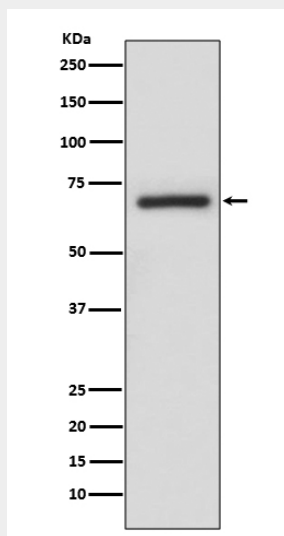
Predominantly in urogenital tissues.

A-RAF Antibody - Protocols

Provided below are standard protocols that you may find useful for product applications.

- [Western Blot](#)
- [Blocking Peptides](#)
- [Dot Blot](#)
- [Immunohistochemistry](#)
- [Immunofluorescence](#)
- [Immunoprecipitation](#)
- [Flow Cytometry](#)
- [Cell Culture](#)

A-RAF Antibody - Images



Western blot analysis of A-RAF expression in A375 cell lysate.