

**CDC40 Antibody**  
Rabbit mAb  
Catalog # AP90945

## Specification

---

### CDC40 Antibody - Product Information

Application	WB, IHC, FC, ICC
Primary Accession	<a href="#">O60508</a>
Reactivity	Rat
Clonality	Monoclonal
<b>Other Names</b>	
cell division cycle 40; EH-binding protein 3; EHB3; pre-mRNA splicing factor 17; PRP17; PRPF17; Cdc40;	
Isotype	Rabbit IgG
Host	Rabbit
Calculated MW	65521 Da

### CDC40 Antibody - Additional Information

Purification	Affinity-chromatography
Immunogen	A synthesized peptide derived from human CDC40
Description	Associates with the spliceosome late in the splicing pathway and may function in the second step of pre-mRNA splicing.
Storage Condition and Buffer	Rabbit IgG in phosphate buffered saline , pH 7.4, 150mM NaCl, 0.02% sodium azide and 50% glycerol. Store at +4°C short term. Store at -20°C long term. Avoid freeze / thaw cycle.

### CDC40 Antibody - Protein Information

**Name** CDC40

**Synonyms** EHB3, PRP17, PRPF17

#### Function

Required for pre-mRNA splicing as component of the activated spliceosome (PubMed: [33220177](http://www.uniprot.org/citations/33220177)). Plays an important role in embryonic brain development; this function does not require proline isomerization (PubMed: [33220177](http://www.uniprot.org/citations/33220177)).

#### Cellular Location

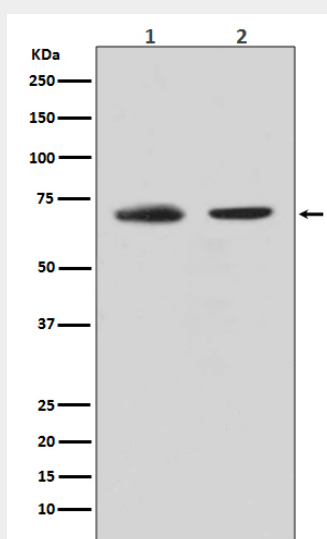
Nucleus. Nucleus speckle

## CDC40 Antibody - Protocols

Provided below are standard protocols that you may find useful for product applications.

- [Western Blot](#)
- [Blocking Peptides](#)
- [Dot Blot](#)
- [Immunohistochemistry](#)
- [Immunofluorescence](#)
- [Immunoprecipitation](#)
- [Flow Cytometry](#)
- [Cell Culture](#)

## CDC40 Antibody - Images



Western blot analysis of CDC40 expression in (1) HeLa cell lysate; (2) K562 cell lysate.