

**PPM1H Antibody (Center)**  
**Affinity Purified Rabbit Polyclonal Antibody (Pab)**  
**Catalog # AP9093c**

**Specification**

---

**PPM1H Antibody (Center) - Product Information**

Application	WB, IHC-P, FC,E
Primary Accession	<a href="#">O9ULR3</a>
Reactivity	Human, Mouse
Host	Rabbit
Clonality	Polyclonal
Isotype	Rabbit IgG
Antigen Region	235-263

**PPM1H Antibody (Center) - Additional Information**

**Gene ID** 57460

**Other Names**

Protein phosphatase 1H, PPM1H, ARHCL1, KIAA1157, URCC2

**Target/Specificity**

This PPM1H antibody is generated from rabbits immunized with a KLH conjugated synthetic peptide between 235-263 amino acids from the Central region of human PPM1H.

**Dilution**

WB~~1:1000  
IHC-P~~1:50~100  
FC~~1:10~50

**Format**

Purified polyclonal antibody supplied in PBS with 0.09% (W/V) sodium azide. This antibody is purified through a protein A column, followed by peptide affinity purification.

**Storage**

Maintain refrigerated at 2-8°C for up to 2 weeks. For long term storage store at -20°C in small aliquots to prevent freeze-thaw cycles.

**Precautions**

PPM1H Antibody (Center) is for research use only and not for use in diagnostic or therapeutic procedures.

**PPM1H Antibody (Center) - Protein Information**

**Name** PPM1H

**Synonyms** ARHCL1, KIAA1157, URCC2

**Function** Dephosphorylates CDKN1B at 'Thr-187', thus removing a signal for proteasomal degradation.

**Cellular Location**

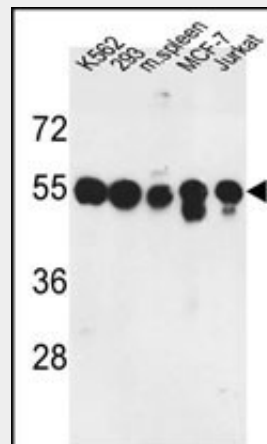
Nucleus. Cytoplasm

**PPM1H Antibody (Center) - Protocols**

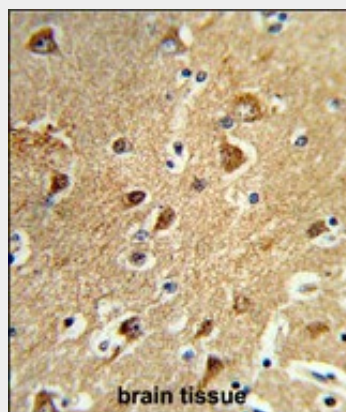
Provided below are standard protocols that you may find useful for product applications.

- [Western Blot](#)
- [Blocking Peptides](#)
- [Dot Blot](#)
- [Immunohistochemistry](#)
- [Immunofluorescence](#)
- [Immunoprecipitation](#)
- [Flow Cytometry](#)
- [Cell Culture](#)

**PPM1H Antibody (Center) - Images**

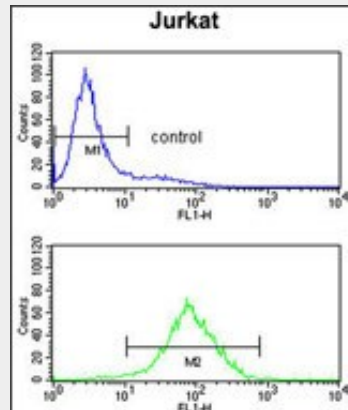


Western blot analysis of PPM1H Antibody (Center) (Cat. #AP9093c) in K562, 293, MCF-7, Jurkat cell line and mouse spleen tissue lysates (35ug/lane). PPM1H (arrow) was detected using the purified Pab.



Formalin-fixed and paraffin-embedded human brain tissue reacted with PPM1H Antibody (Center),

which was peroxidase-conjugated to the secondary antibody, followed by DAB staining. This data demonstrates the use of this antibody for immunohistochemistry; clinical relevance has not been evaluated.



PPM1H Antibody (Center)(Cat. #AP9093c) flow cytometry analysis of Jurkat cells (bottom histogram) compared to a negative control cell (top histogram).FITC-conjugated goat-anti-rabbit secondary antibodies were used for the analysis.

#### **PPM1H Antibody (Center) - References**

Sugiura,T., et.al., Cancer Biol. Ther. 7 (2), 285-292 (2008)  
Labes,M., et.al., Mol. Cell. Neurosci. 12 (1-2), 29-47 (1998)

#### **PPM1H Antibody (Center) - Citations**

- [Effect of PPM1H on malignant phenotype of human pancreatic cancer cells.](#)
- [Analysis of Smad Phosphatase Activity In Vitro.](#)