

Cdc25B Antibody
Rabbit mAb
Catalog # AP90932

Specification

Cdc25B Antibody - Product Information

Application	WB, IP
Primary Accession	P30305
Clonality	Monoclonal
Other Names	
CDC25HU2; CDC25M2; Dual specificity phosphatase Cdc25B; EC 3.1.3.48; M-phase inducer phosphatase 2; MPIP2;	
Isotype	Rabbit IgG
Host	Rabbit
Calculated MW	64987 Da

Cdc25B Antibody - Additional Information

Purification	Affinity-chromatography
Immunogen	A synthesized peptide derived from human Cdc25B
Description	CDC25B is a member of the CDC25 family of phosphatases. CDC25B activates the cyclin dependent kinase CDC2 by removing two phosphate groups and it is required for entry into mitosis. CDC25B shuttles between the nucleus and the cytoplasm due to nuclear localization and nuclear export signals.
Storage Condition and Buffer	Rabbit IgG in phosphate buffered saline , pH 7.4, 150mM NaCl, 0.02% sodium azide and 50% glycerol. Store at +4°C short term. Store at -20°C long term. Avoid freeze / thaw cycle.

Cdc25B Antibody - Protein Information

Name CDC25B

Synonyms CDC25HU2

Function

Tyrosine protein phosphatase which functions as a dosage- dependent inducer of mitotic progression (PubMed: [1836978](http://www.uniprot.org/citations/1836978), PubMed: [20360007](http://www.uniprot.org/citations/20360007) target="_blank">20360007). Directly dephosphorylates CDK1 and stimulates its kinase activity (PubMed: [20360007](http://www.uniprot.org/citations/20360007) target="_blank">20360007). Required for G2/M phases of the cell cycle progression and

abscission during cytokinesis in a ECT2-dependent manner (PubMed:17332740). The three isoforms seem to have a different level of activity (PubMed:1836978).

Cellular Location

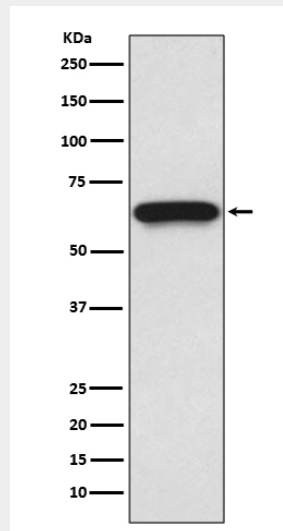
Cytoplasm, cytoskeleton, microtubule organizing center, centrosome. Cytoplasm, cytoskeleton, spindle pole

Cdc25B Antibody - Protocols

Provided below are standard protocols that you may find useful for product applications.

- [Western Blot](#)
- [Blocking Peptides](#)
- [Dot Blot](#)
- [Immunohistochemistry](#)
- [Immunofluorescence](#)
- [Immunoprecipitation](#)
- [Flow Cytometry](#)
- [Cell Culture](#)

Cdc25B Antibody - Images



Western blot analysis of Cdc25B expression in U937 cell lysate.