

Cdc25C Antibody
Rabbit mAb
Catalog # AP90931

Specification

Cdc25C Antibody - Product Information

Application **WB, IHC, FC, ICC, IP**
Primary Accession **[P30307](#)**
Clonality **Monoclonal**
Other Names
CDC25; CDC25C; Cell division cycle 25 homolog C; MPIP3; PPP1R60;

Isotype **Rabbit IgG**
Host **Rabbit**
Calculated MW **53365 Da**

Cdc25C Antibody - Additional Information

Purification **Affinity-chromatography**
Immunogen **A synthesized peptide derived from human Cdc25C**
Description **Functions as a dosage-dependent inducer in mitotic control. It is a tyrosine protein phosphatase required for progression of the cell cycle. It directly dephosphorylates CDK1 and activate its kinase activity.**
Storage Condition and Buffer **Rabbit IgG in phosphate buffered saline , pH 7.4, 150mM NaCl, 0.02% sodium azide and 50% glycerol. Store at +4°C short term. Store at -20°C long term. Avoid freeze / thaw cycle.**

Cdc25C Antibody - Protein Information

Name CDC25C

Function

Functions as a dosage-dependent inducer in mitotic control. Tyrosine protein phosphatase required for progression of the cell cycle (PubMed:[8119945](http://www.uniprot.org/citations/8119945)). When phosphorylated, highly effective in activating G2 cells into prophase (PubMed:[8119945](http://www.uniprot.org/citations/8119945)). Directly dephosphorylates CDK1 and activates its kinase activity (PubMed:[8119945](http://www.uniprot.org/citations/8119945)).

Cellular Location

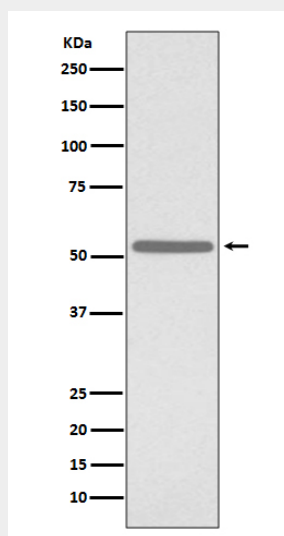
Nucleus

Cdc25C Antibody - Protocols

Provided below are standard protocols that you may find useful for product applications.

- [Western Blot](#)
- [Blocking Peptides](#)
- [Dot Blot](#)
- [Immunohistochemistry](#)
- [Immunofluorescence](#)
- [Immunoprecipitation](#)
- [Flow Cytometry](#)
- [Cell Culture](#)

Cdc25C Antibody - Images



Western blot analysis of Cdc25C expression in K562 cell lysate.