

HSPA14 Antibody
Rabbit mAb
Catalog # AP90927

Specification

HSPA14 Antibody - Product Information

Application **WB, IHC, ICC, IP**
Primary Accession [Q0VDF9](#)
Reactivity **Rat**
Clonality **Monoclonal**

Other Names

HSPA14; Heat shock protein HSP60; Heat shock 70 kDa protein 14; HSP70L1; HSP60; Heat shock 70kDa protein 14; HSP70-like protein 1; HSP70-4;

Isotype **Rabbit IgG**
Host **Rabbit**
Calculated MW **54794 Da**

HSPA14 Antibody - Additional Information

Purification **Affinity-chromatography**
Immunogen **A synthesized peptide derived from human HSPA14**
Description **Component of the ribosome-associated complex (RAC), a complex involved in folding or maintaining nascent polypeptides in a folding-competent state. In the RAC complex, binds to the nascent polypeptide chain, while DNAJC2 stimulates its ATPase activity.**
Storage Condition and Buffer **Rabbit IgG in phosphate buffered saline , pH 7.4, 150mM NaCl, 0.02% sodium azide and 50% glycerol. Store at +4°C short term. Store at -20°C long term. Avoid freeze / thaw cycle.**

HSPA14 Antibody - Protein Information

Name HSPA14

Synonyms HSP60, HSP70L1

Function

Component of the ribosome-associated complex (RAC), a complex involved in folding or maintaining nascent polypeptides in a folding-competent state. In the RAC complex, binds to the nascent polypeptide chain, while DNAJC2 stimulates its ATPase activity.

Cellular Location

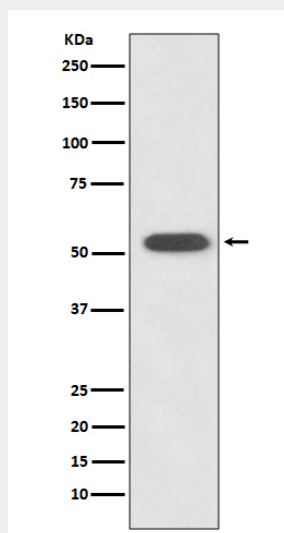
Cytoplasm, cytosol.

HSPA14 Antibody - Protocols

Provided below are standard protocols that you may find useful for product applications.

- [Western Blot](#)
- [Blocking Peptides](#)
- [Dot Blot](#)
- [Immunohistochemistry](#)
- [Immunofluorescence](#)
- [Immunoprecipitation](#)
- [Flow Cytometry](#)
- [Cell Culture](#)

HSPA14 Antibody - Images



Western blot analysis of HSPA14 expression in K562 cell lysate.