

**PAX6 Antibody**  
Rabbit mAb  
Catalog # AP90909

## Specification

---

### PAX6 Antibody - Product Information

Application	WB, IHC, ICC
Primary Accession	<a href="#">P26367</a>
Reactivity	Rat
Clonality	Monoclonal
<b>Other Names</b>	
Paired box protein Pax-6; Aniridia type II protein; Oculorhombin; PAX6; AN2;	
Isotype	Rabbit IgG
Host	Rabbit
Calculated MW	46683 Da

### PAX6 Antibody - Additional Information

Purification	Affinity-chromatography
Immunogen	A synthesized peptide derived from human PAX6
Description	Transcription factor with important functions in the development of the eye, nose, central nervous system and pancreas. Required for the differentiation of pancreatic islet alpha cells (By similarity). Competes with PAX4 in binding to a common element in the glucagon, insulin and somatostatin promoters. Regulates specification of the ventral neuron subtypes by establishing the correct progenitor domains (By similarity). Isoform 5a appears to function as a molecular switch that specifies target genes.
Storage Condition and Buffer	Rabbit IgG in phosphate buffered saline , pH 7.4, 150mM NaCl, 0.02% sodium azide and 50% glycerol. Store at +4°C short term. Store at -20°C long term. Avoid freeze / thaw cycle.

### PAX6 Antibody - Protein Information

**Name** PAX6  
**Synonyms** AN2  
**Function**

Transcription factor with important functions in the development of the eye, nose, central nervous system and pancreas. Required for the differentiation of pancreatic islet alpha cells (By similarity). Competes with PAX4 in binding to a common element in the glucagon, insulin and somatostatin promoters. Regulates specification of the ventral neuron subtypes by establishing the correct progenitor domains (By similarity). Acts as a transcriptional repressor of NFATC1- mediated gene expression (By similarity).

#### Cellular Location

Nucleus {ECO:0000250|UniProtKB:P63015}. [Isoform 5a]: Nucleus {ECO:0000250|UniProtKB:P63016}

#### Tissue Location

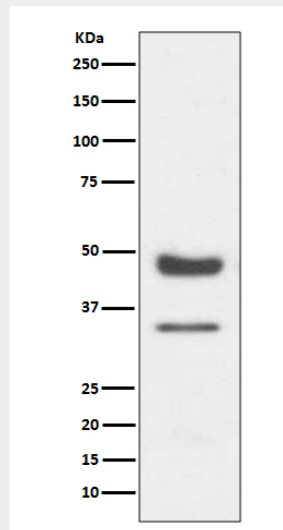
[Isoform 1]: Expressed in lymphoblasts.

### PAX6 Antibody - Protocols

Provided below are standard protocols that you may find useful for product applications.

- [Western Blot](#)
- [Blocking Peptides](#)
- [Dot Blot](#)
- [Immunohistochemistry](#)
- [Immunofluorescence](#)
- [Immunoprecipitation](#)
- [Flow Cytometry](#)
- [Cell Culture](#)

### PAX6 Antibody - Images



Western blot analysis of PAX6 expression in Human brain lysate.