

**JNK3 Antibody**  
Rabbit mAb  
Catalog # AP90906

## Specification

---

### JNK3 Antibody - Product Information

Application	WB, FC, ICC
Primary Accession	<a href="#">P53779</a>
Reactivity	Rat
Clonality	Monoclonal
<b>Other Names</b>	
Mitogen-activated protein kinase 10; MAP kinase 10; MAPK 10; MAP kinase p49 3F12; Stress-activated protein kinase 1b; SAPK1b; MAPK10; JNK3; JNK3A; PRKM10; SAPK1B;	
Isotype	Rabbit IgG
Host	Rabbit
Calculated MW	52585 Da

### JNK3 Antibody - Additional Information

Purification	Affinity-chromatography
Immunogen	A synthesized peptide derived from human JNK3
Description	The stress-activated protein kinase/Jun-amino-terminal kinase SAPK/JNK is potently and preferentially activated by a variety of environmental stresses including UV and gamma radiation, ceramides, inflammatory cytokines, and in some instances, growth factors and GPCR agonists. Plays regulatory roles in the signaling pathways during neuronal apoptosis.
Storage Condition and Buffer	Rabbit IgG in phosphate buffered saline , pH 7.4, 150mM NaCl, 0.02% sodium azide and 50% glycerol. Store at +4°C short term. Store at -20°C long term. Avoid freeze / thaw cycle.

### JNK3 Antibody - Protein Information

**Name** MAPK10

**Synonyms** JNK3, JNK3A, PRKM10, SAPK1B

#### Function

Serine/threonine-protein kinase involved in various processes such as neuronal proliferation, differentiation, migration and programmed cell death. Extracellular stimuli such as pro-inflammatory cytokines or physical stress stimulate the stress-activated protein kinase/c-Jun

N-terminal kinase (SAP/JNK) signaling pathway. In this cascade, two dual specificity kinases MAP2K4/MKK4 and MAP2K7/MKK7 phosphorylate and activate MAPK10/JNK3. In turn, MAPK10/JNK3 phosphorylates a number of transcription factors, primarily components of AP-1 such as JUN and ATF2 and thus regulates AP-1 transcriptional activity. Plays regulatory roles in the signaling pathways during neuronal apoptosis. Phosphorylates the neuronal microtubule regulator STMN2. Acts in the regulation of the amyloid-beta precursor protein/APP signaling during neuronal differentiation by phosphorylating APP. Participates also in neurite growth in spiral ganglion neurons. Phosphorylates the CLOCK-BMAL1 heterodimer and plays a role in the photic regulation of the circadian clock (PubMed:<http://www.uniprot.org/citations/22441692> target="\_blank">22441692</a>). Phosphorylates JUND and this phosphorylation is inhibited in the presence of MEN1 (PubMed:<http://www.uniprot.org/citations/22327296> target="\_blank">22327296</a>).

#### Cellular Location

Cytoplasm. Membrane; Lipid-anchor. Nucleus Mitochondrion. Note=Palmitoylation regulates MAPK10 trafficking to cytoskeleton. Recruited to the mitochondria in the presence of SARM1 (By similarity).

#### Tissue Location

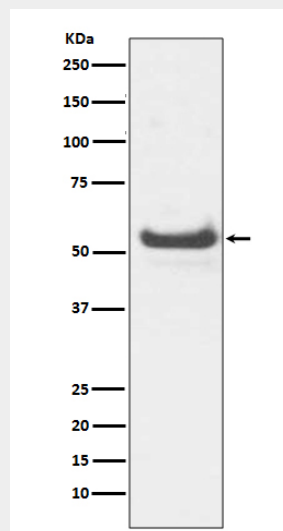
Specific to a subset of neurons in the nervous system. Present in the hippocampus and areas, cerebellum, striatum, brain stem, and weakly in the spinal cord. Very weak expression in testis and kidney

### JNK3 Antibody - Protocols

Provided below are standard protocols that you may find useful for product applications.

- [Western Blot](#)
- [Blocking Peptides](#)
- [Dot Blot](#)
- [Immunohistochemistry](#)
- [Immunofluorescence](#)
- [Immunoprecipitation](#)
- [Flow Cytometry](#)
- [Cell Culture](#)

### JNK3 Antibody - Images



Western blot analysis of JNK3 expression in HeLa lysate.