

TRK fused gene Antibody
Rabbit mAb
Catalog # AP90896

Specification

TRK fused gene Antibody - Product Information

Application	WB, IHC, ICC, IP
Primary Accession	O92734
Reactivity	Rat
Clonality	Monoclonal
Other Names	
HMSNP; Protein TFG; SPG57; TF6; TFG; TRK fused; TRK fused gene protein; TRKT3; TRKT3 oncogene;	
Isotype	Rabbit IgG
Host	Rabbit
Calculated MW	43448 Da

TRK fused gene Antibody - Additional Information

Purification	Affinity-chromatography
Immunogen	A synthesized peptide derived from human TRK fused gene
Description	Plays a role in the normal dynamic function of the endoplasmic reticulum (ER) and its associated microtubules.
Storage Condition and Buffer	Rabbit IgG in phosphate buffered saline , pH 7.4, 150mM NaCl, 0.02% sodium azide and 50% glycerol. Store at +4°C short term. Store at -20°C long term. Avoid freeze / thaw cycle.

TRK fused gene Antibody - Protein Information

Name TFG

Function

Plays a role in the normal dynamic function of the endoplasmic reticulum (ER) and its associated microtubules (PubMed:[23479643](http://www.uniprot.org/citations/23479643), PubMed:[27813252](http://www.uniprot.org/citations/27813252)). Required for secretory cargo traffic from the endoplasmic reticulum to the Golgi apparatus (PubMed:[21478858](http://www.uniprot.org/citations/21478858)).

Cellular Location

Endoplasmic reticulum. Note=Localizes to endoplasmic reticulum exit site (ERES), also known as transitional endoplasmic reticulum (tER) (PubMed:21478858, PubMed:27813252).

Tissue Location

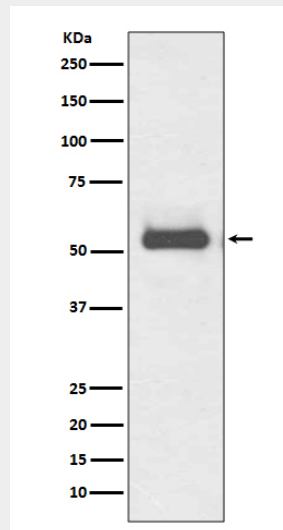
Ubiquitous.

TRK fused gene Antibody - Protocols

Provided below are standard protocols that you may find useful for product applications.

- [Western Blot](#)
- [Blocking Peptides](#)
- [Dot Blot](#)
- [Immunohistochemistry](#)
- [Immunofluorescence](#)
- [Immunoprecipitation](#)
- [Flow Cytometry](#)
- [Cell Culture](#)

TRK fused gene Antibody - Images



Western blot analysis of TRK fused gene expression in HeLa cell lysate.