

MEK3 Antibody
Rabbit mAb
Catalog # AP90876

Specification

MEK3 Antibody - Product Information

| | |
|---|------------------------|
| Application | WB, IHC, FC, ICC, IP |
| Primary Accession | P46734 |
| Reactivity | Rat |
| Clonality | Monoclonal |
| Other Names | |
| MEK3; MAP kinase kinase 3; MAPKK3; MAPK/ERK kinase 3; | |
| Isotype | Rabbit IgG |
| Host | Rabbit |
| Calculated MW | 39318 Da |

MEK3 Antibody - Additional Information

| | |
|------------------------------|---|
| Purification | Affinity-chromatography |
| Immunogen | A synthesized peptide derived from human MEK3 |
| Description | Dual specificity kinase. Is activated by cytokines and environmental stress in vivo. Catalyzes the concomitant phosphorylation of a threonine and a tyrosine residue in the MAP kinase p38. |
| Storage Condition and Buffer | Rabbit IgG in phosphate buffered saline , pH 7.4, 150mM NaCl, 0.02% sodium azide and 50% glycerol. Store at +4°C short term. Store at -20°C long term. Avoid freeze / thaw cycle. |

MEK3 Antibody - Protein Information

Name MAP2K3

Synonyms MEK3, MKK3, PRKMK3, SKK2

Function

Dual specificity kinase. Is activated by cytokines and environmental stress in vivo. Catalyzes the concomitant phosphorylation of a threonine and a tyrosine residue in the MAP kinase p38. Part of a signaling cascade that begins with the activation of the adrenergic receptor ADRA1B and leads to the activation of MAPK14.

Tissue Location

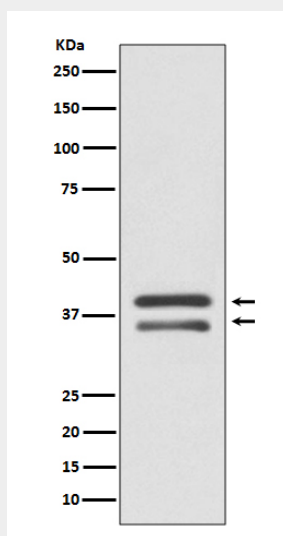
Abundant expression is seen in the skeletal muscle. It is also widely expressed in other tissues

MEK3 Antibody - Protocols

Provided below are standard protocols that you may find useful for product applications.

- [Western Blot](#)
- [Blocking Peptides](#)
- [Dot Blot](#)
- [Immunohistochemistry](#)
- [Immunofluorescence](#)
- [Immunoprecipitation](#)
- [Flow Cytometry](#)
- [Cell Culture](#)

MEK3 Antibody - Images



Western blot analysis of MEK3 expression in HepG2 cell lysate.