

Cyclin B2 Antibody
Rabbit mAb
Catalog # AP90831

Specification

Cyclin B2 Antibody - Product Information

Application	WB, IHC, ICC, IP
Primary Accession	O95067
Reactivity	Rat
Clonality	Monoclonal
Other Names	
ccnb2; CycB2; Cyclin B2; G2/mitotic specific cyclin B2;	
Isotype	Rabbit IgG
Host	Rabbit
Calculated MW	45282 Da

Cyclin B2 Antibody - Additional Information

Purification	Affinity-chromatography
Immunogen	A synthesized peptide derived from human Cyclin B2
Description	Cyclin B2 is a member of the cyclin family, specifically the B-type cyclins. The B-type cyclins, B1 and B2, associate with p34cdc2 and are essential components of the cell cycle regulatory machinery. Essential for the control of the cell cycle at the G2/M (mitosis) transition.
Storage Condition and Buffer	Rabbit IgG in phosphate buffered saline , pH 7.4, 150mM NaCl, 0.02% sodium azide and 50% glycerol. Store at +4°C short term. Store at -20°C long term. Avoid freeze / thaw cycle.

Cyclin B2 Antibody - Protein Information

Name CCNB2

Function

Essential for the control of the cell cycle at the G2/M (mitosis) transition.

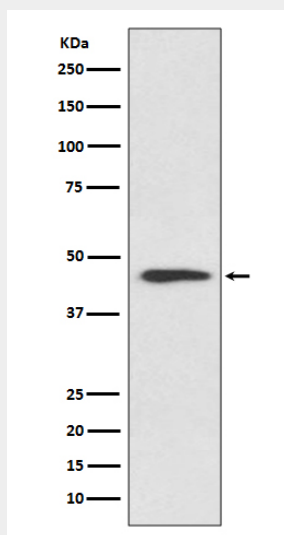
Cyclin B2 Antibody - Protocols

Provided below are standard protocols that you may find useful for product applications.

- [Western Blot](#)

- [Blocking Peptides](#)
- [Dot Blot](#)
- [Immunohistochemistry](#)
- [Immunofluorescence](#)
- [Immunoprecipitation](#)
- [Flow Cytometry](#)
- [Cell Culture](#)

Cyclin B2 Antibody - Images



Western blot analysis of Cyclin B2 expression in HeLa cell lysate.