

**IRS1 Antibody**  
Rabbit mAb  
Catalog # AP90830

## Specification

---

### IRS1 Antibody - Product Information

Application	WB, IHC, ICC
Primary Accession	<a href="#">P35568</a>
Clonality	Monoclonal
<b>Other Names</b>	
HIRS1; Insulin receptor substrate 1; IRS 1; IRS1;	
Isotype	Rabbit IgG
Host	Rabbit
Calculated MW	131591 Da

### IRS1 Antibody - Additional Information

Purification	Affinity-chromatography
Immunogen	A synthesized peptide derived from human IRS1
Description	IRS1 is one of the major substrates of the insulin receptor kinase. May mediate the control of various cellular processes by insulin. When phosphorylated by the insulin receptor binds specifically to various cellular proteins containing SH2 domains such as phosphatidylinositol 3-kinase p85 subunit or GRB2.
Storage Condition and Buffer	Rabbit IgG in phosphate buffered saline , pH 7.4, 150mM NaCl, 0.02% sodium azide and 50% glycerol. Store at +4°C short term. Store at -20°C long term. Avoid freeze / thaw cycle.

### IRS1 Antibody - Protein Information

**Name** IRS1

#### Function

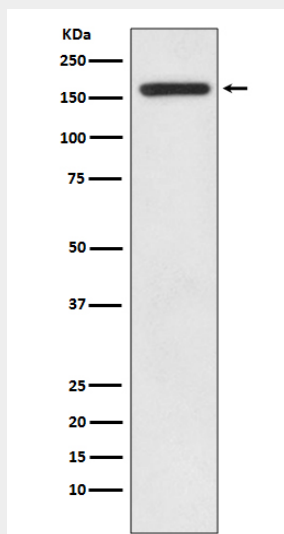
May mediate the control of various cellular processes by insulin. When phosphorylated by the insulin receptor binds specifically to various cellular proteins containing SH2 domains such as phosphatidylinositol 3-kinase p85 subunit or GRB2. Activates phosphatidylinositol 3-kinase when bound to the regulatory p85 subunit (By similarity).

### IRS1 Antibody - Protocols

Provided below are standard protocols that you may find useful for product applications.

- [Western Blot](#)
- [Blocking Peptides](#)
- [Dot Blot](#)
- [Immunohistochemistry](#)
- [Immunofluorescence](#)
- [Immunoprecipitation](#)
- [Flow Cytometry](#)
- [Cell Culture](#)

### IRS1 Antibody - Images



Western blot analysis of IRS1 expression in HEK293 cell lysate.