

**Cyclin D3 Antibody**  
Rabbit mAb  
Catalog # AP90828

## Specification

---

### Cyclin D3 Antibody - Product Information

|   |                        |
|---|------------------------|
| Application   | WB, FC, ICC            |
| Primary Accession   | <a href="#">P30281</a> |
| Clonality   | Monoclonal             |
| <b>Other Names</b>  |                        |
| CCND 3; Ccnd3; CyclinD3; D3 type cyclin; G1 S specific cyclin D3; |                        |
| Isotype   | Rabbit IgG             |
| Host  | Rabbit                 |
| Calculated MW   | 32520 Da               |

### Cyclin D3 Antibody - Additional Information

|                              |  |
|------------------------------|--|
| Purification                 | <b>Affinity-chromatography</b>   |
| Immunogen                    | <b>A synthesized peptide derived from human Cyclin D3</b>  |
| Description                  | <b>Regulatory component of the cyclin D3-CDK4 (DC) complex that phosphorylates and inhibits members of the retinoblastoma (RB) protein family including RB1 and regulates the cell-cycle during G1/S transition.</b> |
| Storage Condition and Buffer | <b>Rabbit IgG in phosphate buffered saline , pH 7.4, 150mM NaCl, 0.02% sodium azide and 50% glycerol. Store at +4°C short term. Store at -20°C long term. Avoid freeze / thaw cycle.</b>                             |

### Cyclin D3 Antibody - Protein Information

**Name** CCND3 {ECO:0000303|PubMed:1386336, ECO:0000312|HGNC:HGNC:1585}

#### Function

Regulatory component of the cyclin D3-CDK4 (DC) complex that phosphorylates and inhibits members of the retinoblastoma (RB) protein family including RB1 and regulates the cell-cycle during G(1)/S transition (PubMed:<a href="http://www.uniprot.org/citations/8114739" target="\_blank">8114739</a>). Phosphorylation of RB1 allows dissociation of the transcription factor E2F from the RB/E2F complex and the subsequent transcription of E2F target genes which are responsible for the progression through the G(1) phase (PubMed:<a href="http://www.uniprot.org/citations/8114739" target="\_blank">8114739</a>). Hypophosphorylates RB1 in early G(1) phase (PubMed:<a href="http://www.uniprot.org/citations/8114739" target="\_blank">8114739</a>). Cyclin D- CDK4 complexes are major integrators of various mitogenic and antimitogenic signals (PubMed:<a href="http://www.uniprot.org/citations/8114739" target="\_blank">8114739</a>). Component of

the ternary complex, cyclin D3/CDK4/CDKN1B, required for nuclear translocation and activity of the cyclin D-CDK4 complex (PubMed:<a href="http://www.uniprot.org/citations/16782892" target="\_blank">16782892</a>). Shows transcriptional coactivator activity with ATF5 independently of CDK4 (PubMed:<a href="http://www.uniprot.org/citations/15358120" target="\_blank">15358120</a>).

#### Cellular Location

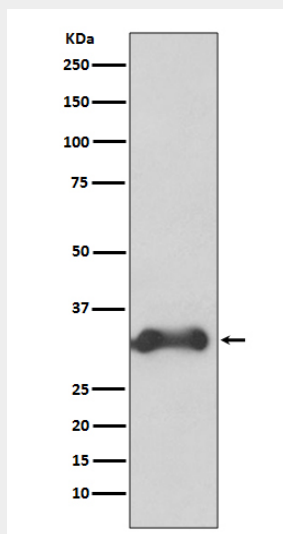
Nucleus. Cytoplasm

#### Cyclin D3 Antibody - Protocols

Provided below are standard protocols that you may find useful for product applications.

- [Western Blot](#)
- [Blocking Peptides](#)
- [Dot Blot](#)
- [Immunohistochemistry](#)
- [Immunofluorescence](#)
- [Immunoprecipitation](#)
- [Flow Cytometry](#)
- [Cell Culture](#)

#### Cyclin D3 Antibody - Images



Western blot analysis of Cyclin D3 expression in K562 cell lysate.