

SOX11 Antibody
Rabbit mAb
Catalog # AP90824**Specification**

SOX11 Antibody - Product Information

| | |
|-------------------|------------------------|
| Application | WB, ICC, IP |
| Primary Accession | P35716 |
| Reactivity | Rat |
| Clonality | Monoclonal |

Other Names

MRD27; SOX11; SRY (sex determining region Y) box 11; SRY related HMG box gene 11 ; SRY-box 11; Transcription factor SOX-11;

| | |
|---------------|------------|
| Isotype | Rabbit IgG |
| Host | Rabbit |
| Calculated MW | 46679 Da |

SOX11 Antibody - Additional Information

| | |
|------------------------------|---|
| Purification | Affinity-chromatography |
| Immunogen | A synthesized peptide derived from human SOX11 |
| Description | Probably important in the developing nervous system. May also have a role in tissue modeling during development. |
| Storage Condition and Buffer | Rabbit IgG in phosphate buffered saline , pH 7.4, 150mM NaCl, 0.02% sodium azide and 50% glycerol. Store at +4°C short term. Store at -20°C long term. Avoid freeze / thaw cycle. |

SOX11 Antibody - Protein Information

Name SOX11

Function

Transcription factor that acts as a transcriptional activator (PubMed:24886874, PubMed:26543203). Binds cooperatively with POU3F2/BRN2 or POU3F1/OCT6 to gene promoters, which enhances transcriptional activation (By similarity). Acts as a transcriptional activator of TEAD2 by binding to its gene promoter and first intron (By similarity). Plays a redundant role with SOX4 and SOX12 in cell survival of developing tissues such as the neural tube, branchial arches and somites, thereby contributing to organogenesis (By similarity).

Cellular Location

Nucleus {ECO:0000255|PROSITE-ProRule:PRU00267, ECO:0000269|PubMed:24886874, ECO:0000269|PubMed:35938035}

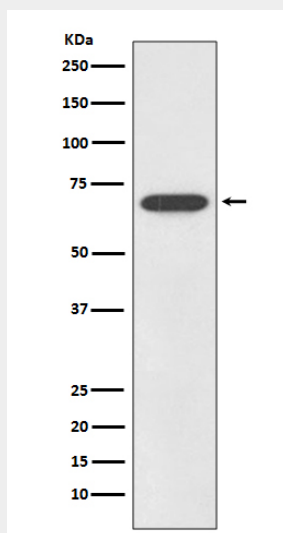
Tissue Location

Expressed primarily in the brain and heart, with low expression in the kidney, pancreas and muscle

SOX11 Antibody - Protocols

Provided below are standard protocols that you may find useful for product applications.

- [Western Blot](#)
- [Blocking Peptides](#)
- [Dot Blot](#)
- [Immunohistochemistry](#)
- [Immunofluorescence](#)
- [Immunoprecipitation](#)
- [Flow Cytometry](#)
- [Cell Culture](#)

SOX11 Antibody - Images

Western blot analysis of SOX11 expression in SHSY5Y cell lysate.